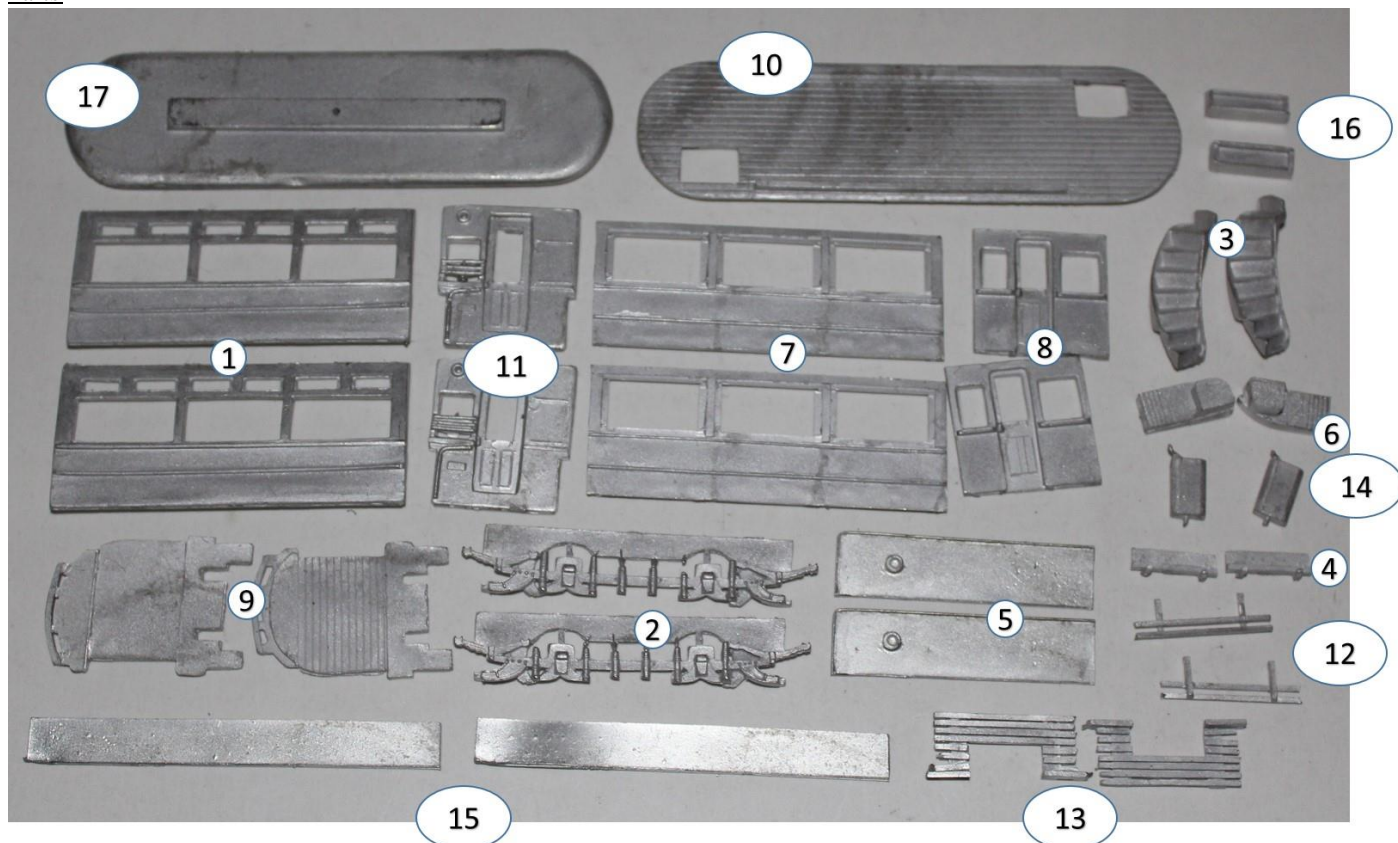


## KW Trams

### KW 007d Balcony 3+3 window reversed stair car.

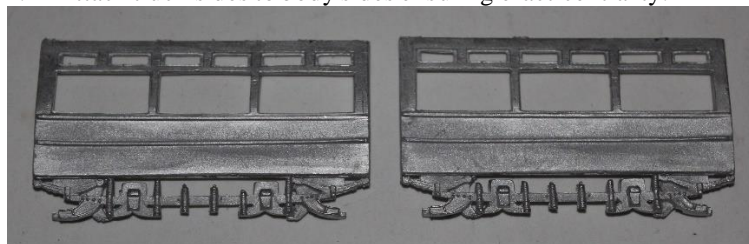
#### Parts



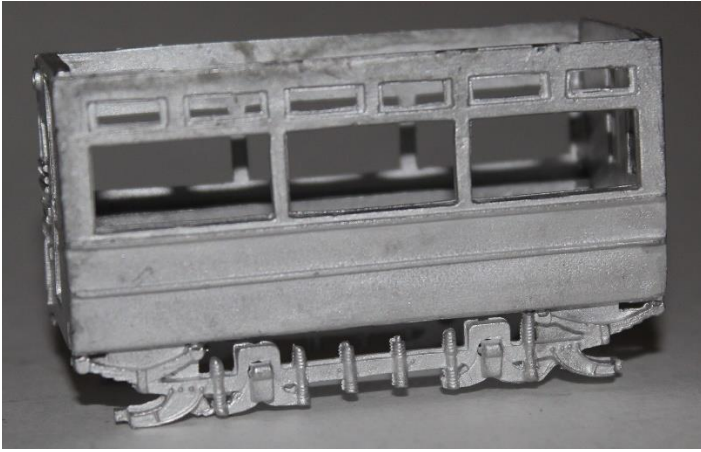
1. Tram side 3 window	x2
2. Truck side	x2
3. Stairs	x2
4. Step	x2
5. Dash panel	x2
6. Stair base	x2
7. Upper sides	x2
8. Upper bulkheads	x2
9. Platform	x2
10. Upper floor	x1
11. Lower deck bulkhead	x2
12. Life guard	x2
13. Life tray	x2
14. Controller	x2
15. Balcony ends	x2
16. Destination box	x2
17. Roof	x1

#### Build Steps

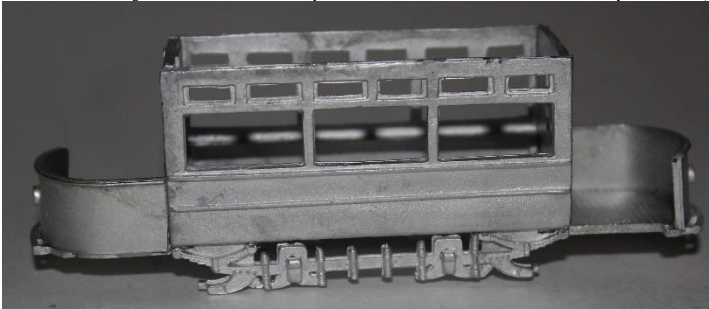
1. Attach truck sides to body sides ensuring exact centrality.



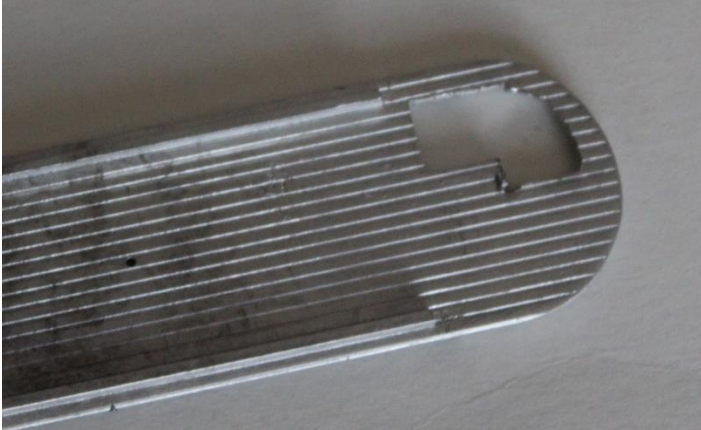
2. Fix bulk heads to sides squarely and marry subassemblies to produce a box effect.



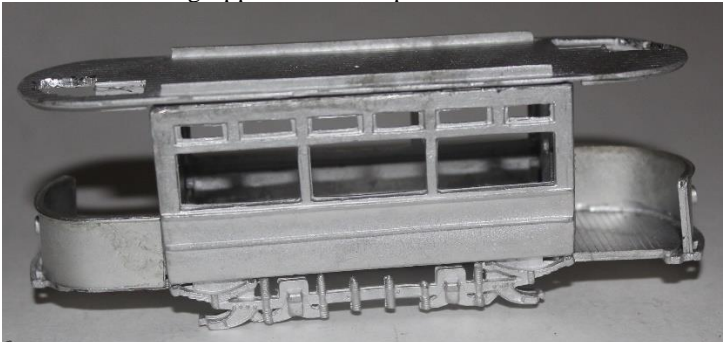
3. With model inverted, attach platforms to bottom edges of bulkheads; ensuring the lip is within the body and not on the platform.
4. Carefully bend the dash panels to fit the curve of the platform, trim to length and fit to platform.



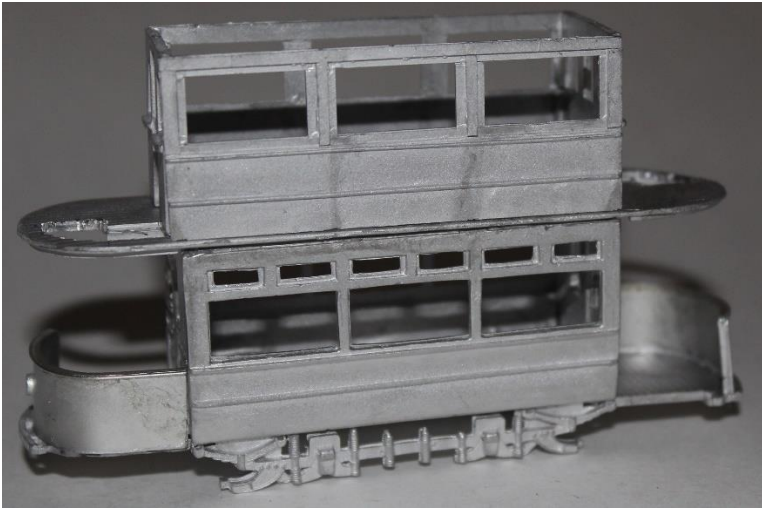
5. Enlarge the stair hole at each end of the upper deck floor to allow the reversed stairs to fit.



6. Fix the ceiling/upper deck floor piece



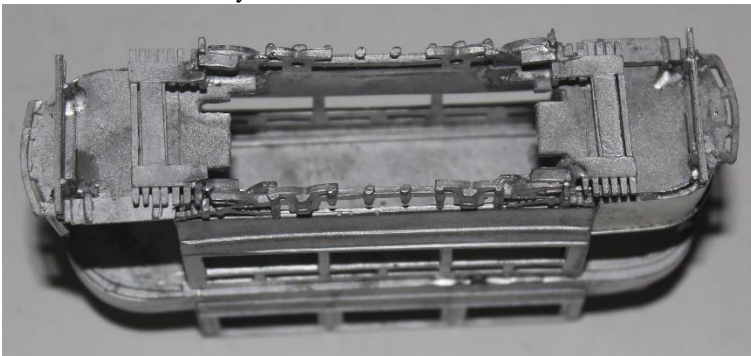
7. Build the upperdeck sides & bulkheads on the upper deck floor to form a box.



8. Carefully bend the balcony ends and trim to fit.



9. Turn model over and fit the steps, fix the life guards under the front panels and the life trays attached to the front edge of the truck sides so they do not interfere with the mechanism.



10. Fit the stair bases and stairs (unless you wish to paint them first).

