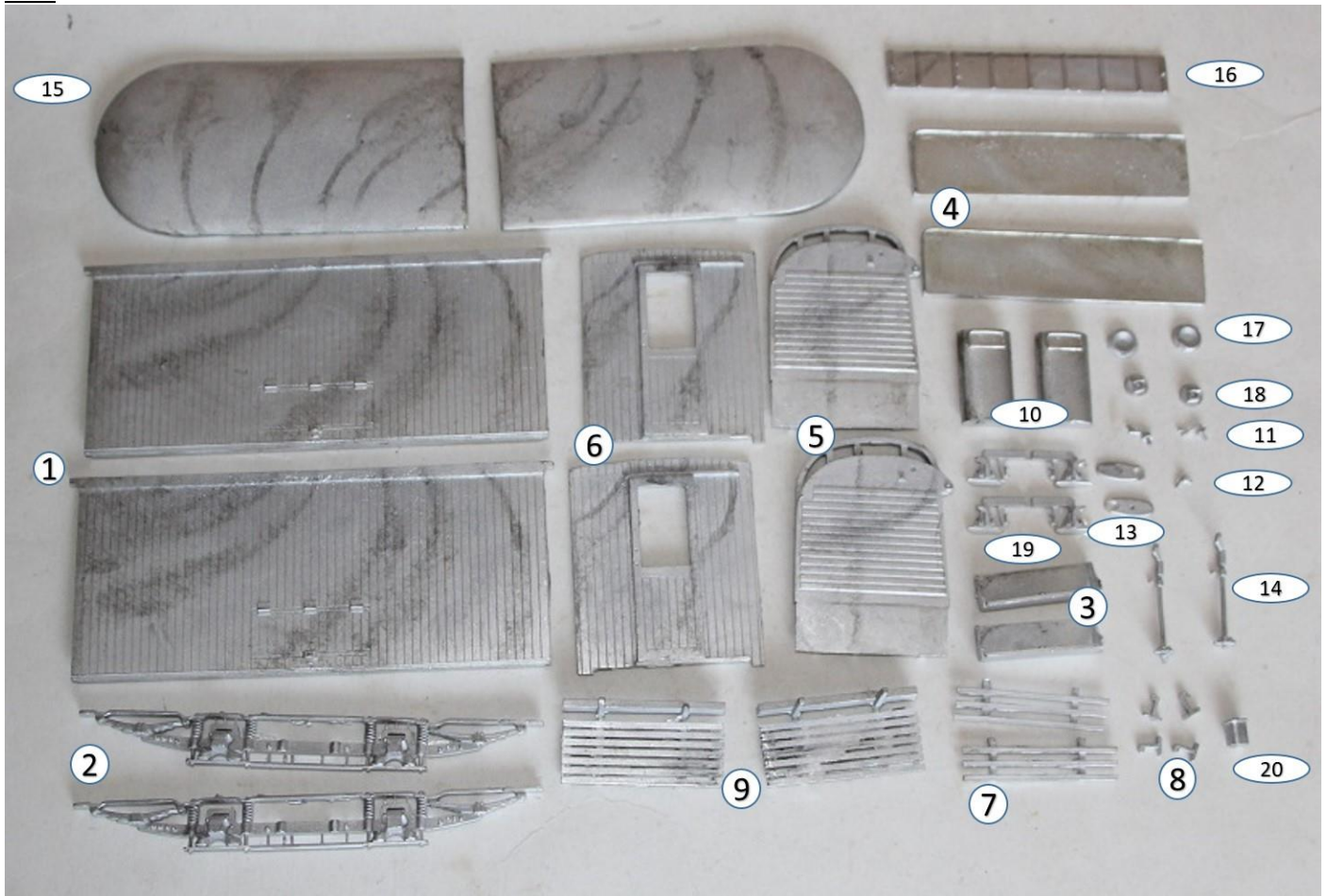


# KW Trams

## KW 118a LCC Class J

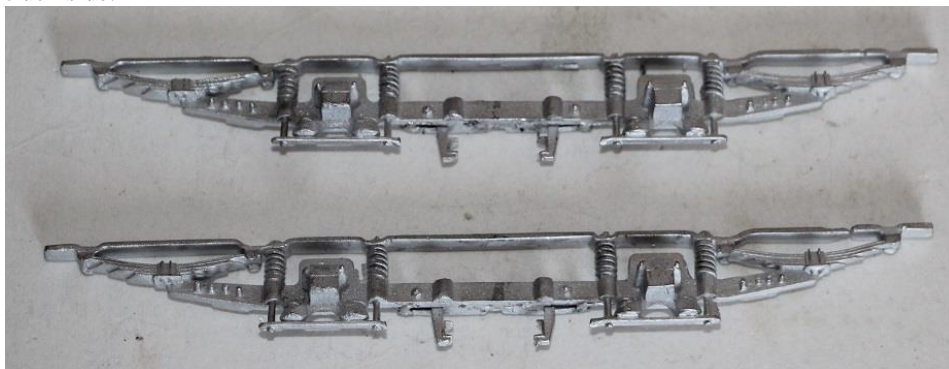
### Parts



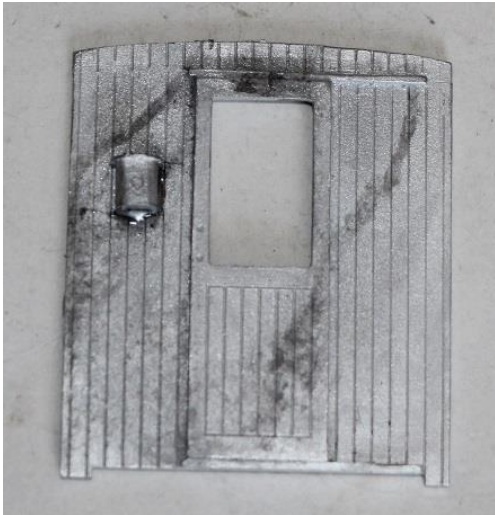
1. Tram side	x2	11. Controller handles	x2
2. Truck side	x2	12. Controller key	x1
3. Step	x2	13. Controller top	x2
4. Dash	x2	14. Handbrakes	x2
5. Platform	x2	15. Roof 1/2	x2
6. Bulkhead	x2	16. Trolley plank	x1
7. Life guard	x2	17. Headlamp	x2
8. Life guard brackets	x4	18. Headlamp blackouts	x2
9. Life tray	x2	19. Plough carrier	x2
10. Controller	x2		

### Build Steps

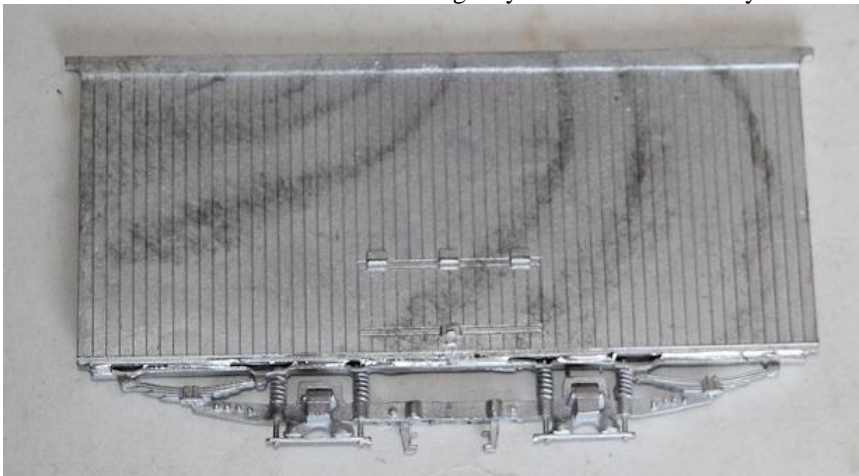
1. Cut the track brakes off the plough carriers, then fit the plough carrier to the centre of the truck side.



2. Fit the conduit switch to one bulkhead.



3. Fit the truck sides to the sides ensuring they are mounted centrally.



4. Fix bulkheads to sides squarely and marry all subassemblies to produce a box.

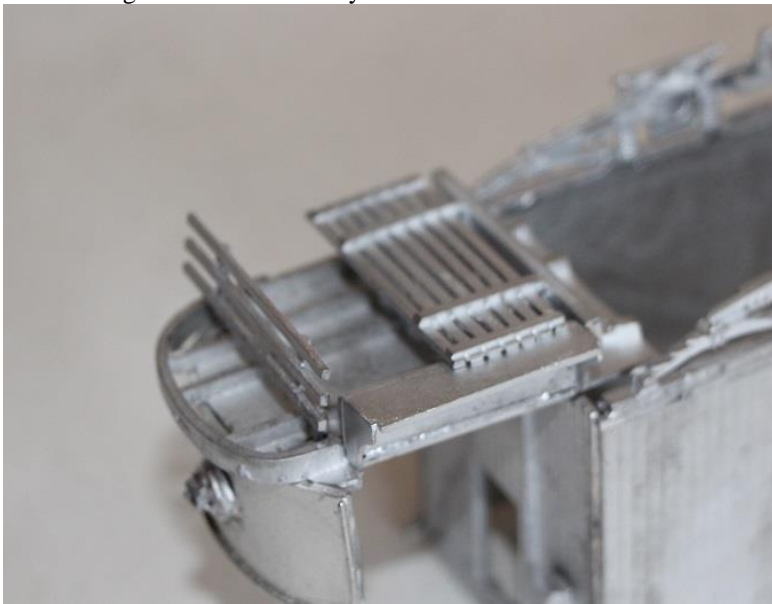


5. With model inverted, attach platforms to bottom edges of bulkheads; ensuring the lip is within the body and not on the platform and that it is fixed against the nearside of the body.

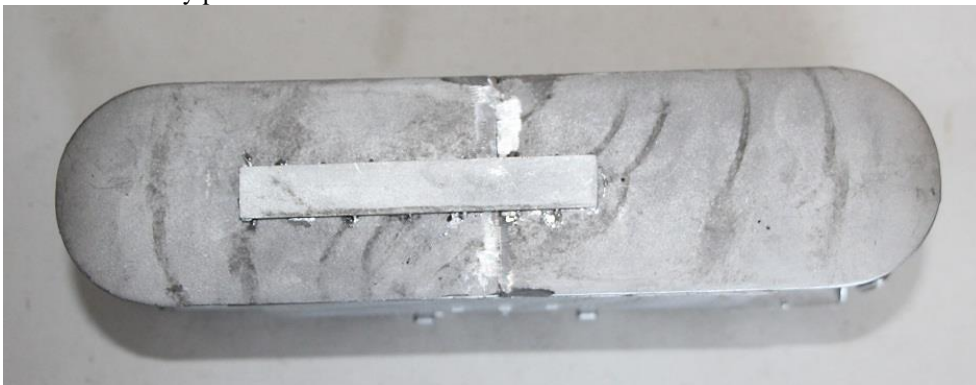
6. Carefully bend the dash and shorten if required to fit the curve of the platform and fit in place. Fit the headlamp to the centre of the dash. If required, cut down the back of the headlamp blackouts and fit to centre of headlamps.



7. Turn model over and attach the under-gear – steps, front life guards and the life trays. Fit the lifetray near the back edge of the platform. Drill holes through the lifeguards and lifeguard supports to take a thin piece of wire (not supplied). Push the wire through the support, lifetray and other support. Fix the outer side of the supports to the wire, making sure that they align correctly and the lifeguard can move freely on the wire.



8. Fix the two halves of the roof together, ensuring that they are flat and fix in place.  
9. Fit the trolley plank to the centre of the roof.



10. Drill a hole in the tops of the controllers and fit the controller handles. Fix the controllers inside the dash panels just left of centre, and the handbrake to the right so the driver would have one in either hand.

