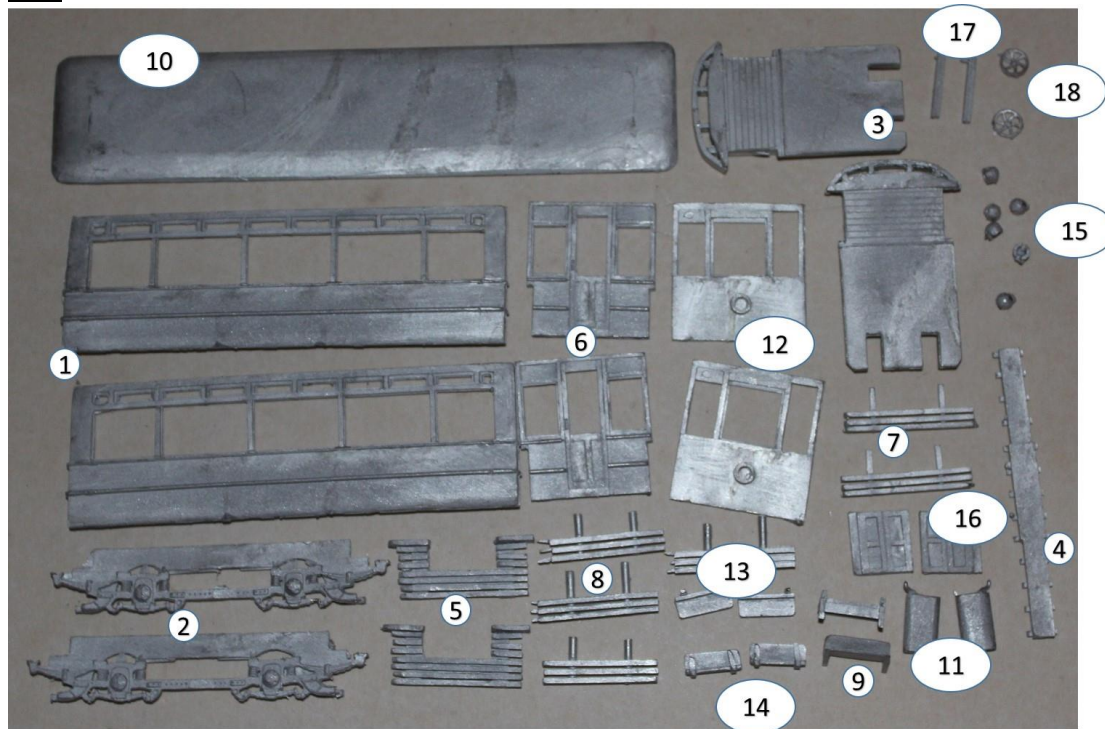


## KW Trams

### **KW 014a Falkirk ex Dearne**

#### Parts



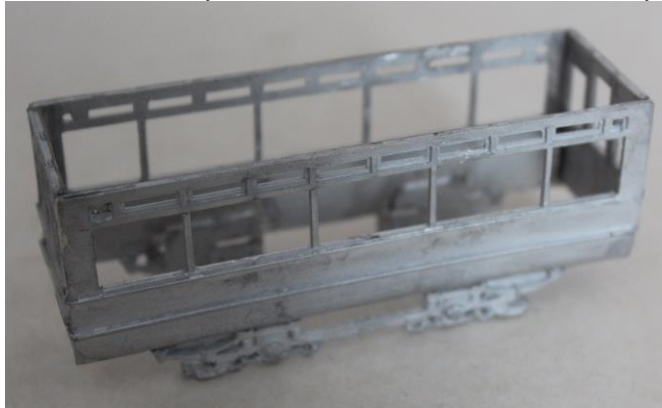
1.	5 windowed sides	x2
2.	Truck side	x2
3.	Platform	x2
4.	Trolley plank	x2
5.	Life tray	x2
6.	Bulkhead	x2
7.	Front lifeguard	x2
8.	Side lifeguard	x4
9.	Destination box	x2
10.	Roof	x1
11.	Controller	x2
12.	Vestibule	x2
13.	Open steps	x2
14.	Closed steps	x2
15.	Roof ventilators	x6
16.	Half doors	x2
17.	Brake posts	x2
18.	Brake wheels	x2

#### Build Steps

1. Attach truck sides to the body sides ensuring they are exactly central



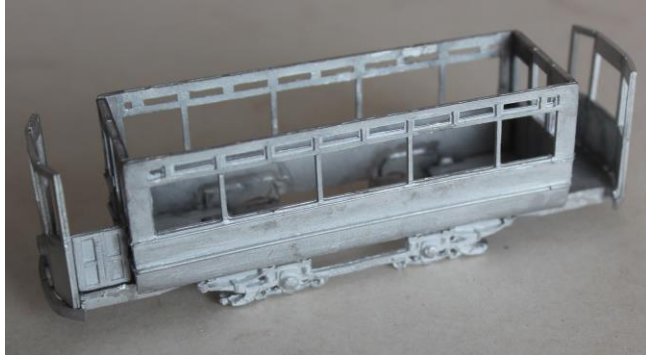
2. Assemble body sides and bulkheads into a box assembly.



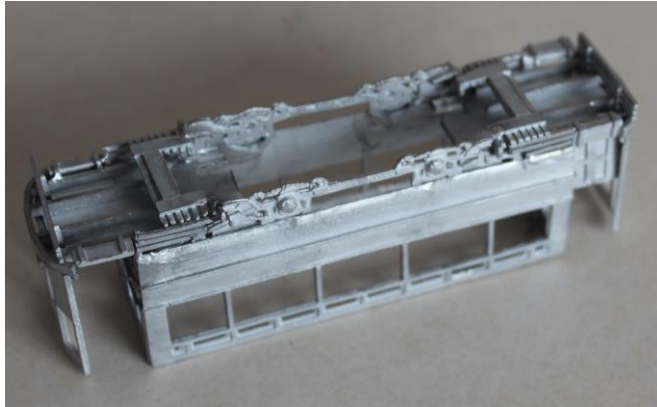
3. Fit the platforms. These should be central, the bulkhead front fitting up to the last floor rib. You will probably need to trim the sides of the platform to get it to fit between the truck sides. If fitting a BEC or ABS truck, you will need to shorten the back end of the platform by 5 mm and extend the depth of the slots to take the mechanism.



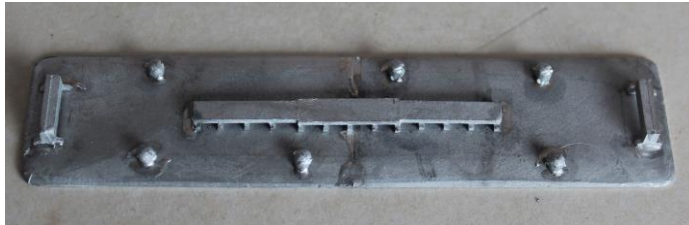
4. Now carefully bend the vestibules at the grooves in the back to match the shape of the front edge of the platform and fit. If modelling car 11, use the narrower vestibule and the large door. If modelling the other cars, use the wider vestibule and half doors.
5. If required, fit the half door on the nearside between the bulkhead and the vestibule, and flush with the platform edge. If modelling car 11, then the door fits at an angle between the end of the vestibule and the outer edge of the bulkhead. You may need to file down the beading on the bulkhead to get a good fit.



6. Turn the model over and fit the steps (open ones on offside and closed on nearside), front life guards, and side lifeguards (they will need to be trimmed to fit). Fit the life trays to the ends of the truck sides.



7. If modelling car 11, cut 4.5mm from each end of the roof. If modelling the others, remove 9mm from the middle of the roof.
8. Now fit the trolley plank centrally to the roof. Fit the destination boxes to the roof ends. Fit the 6 ventilators to the roof.



9. Fit the roof to the body of the car.

