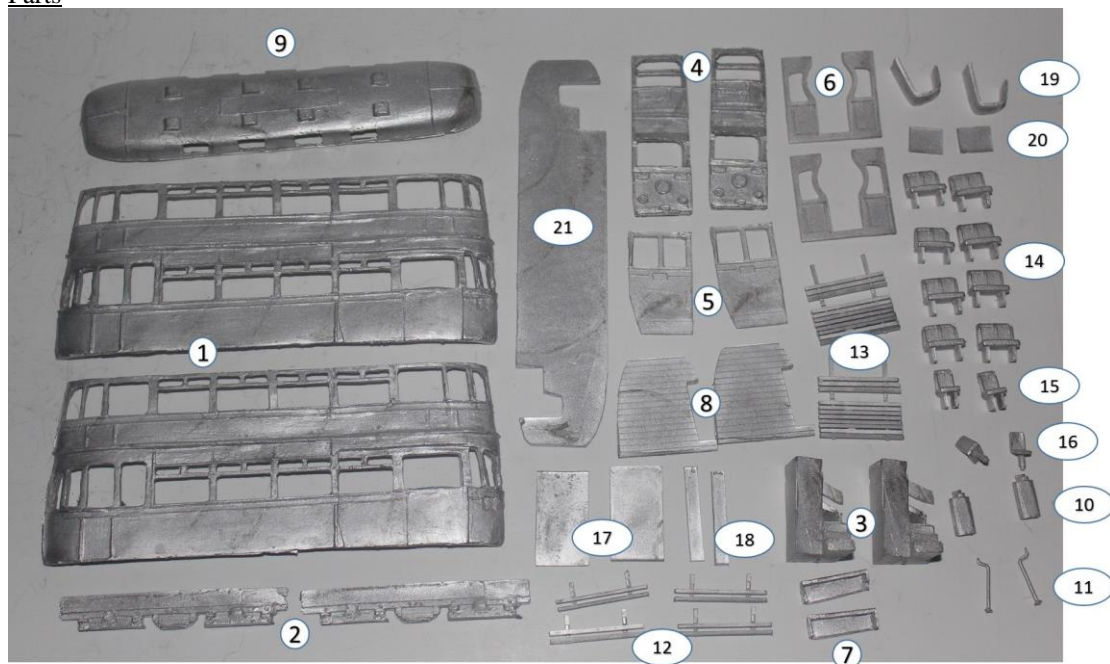


## KW Trams

### KW 023 Glasgow Lightweight

#### Parts



#### Contents

1. Tram side	x2
2. Truck side	x2
3. Stairs	x2
4. Tram end	x2
5. Door	x2
6. Bulkhead	x2
7. Step	x2
8. Platform	x2
9. Roof	x1
10. Controller	x2
11. Handbrake	x2
12. Life guard	x4
13. Life tray	x2
14. Double seats	x8
15. Single seats	x2
16. Driver seat	x2
17. Driver partition	x2
18. Step partition	x2
19. Upper partition curved	x2
20. Upper partition straight	x2
21. Ceiling / floor	x1

#### Build Steps

1. Cut out doorways and fit doors in open or closed position as required.



2. Fix ends to one side squarely and fit floor in place just above tops of windows.

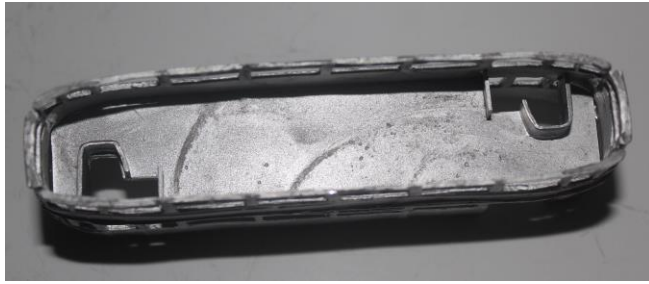


3. Fit second side to assembly.

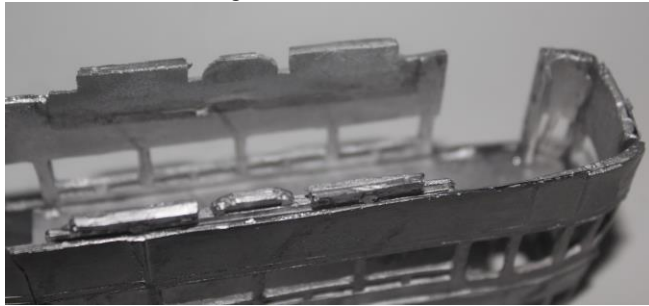


4. Fit the stair partitions in place on the upper deck.

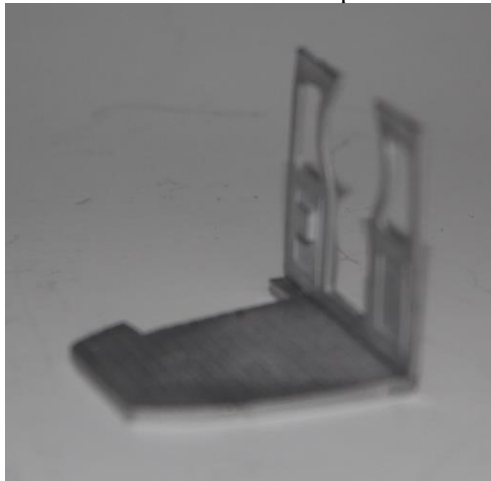




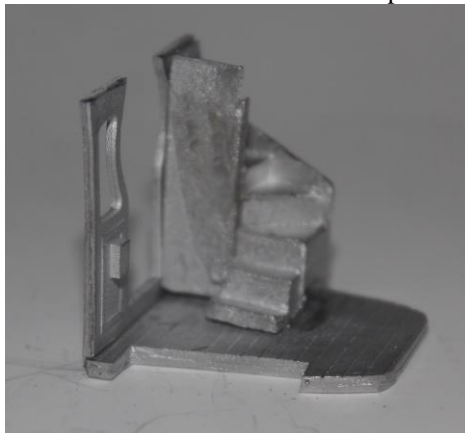
5. Fit truck sides.
6. Shorten the small partition if required to allow platform to fit inside tram body, then attach inside the tram to the right of the door.

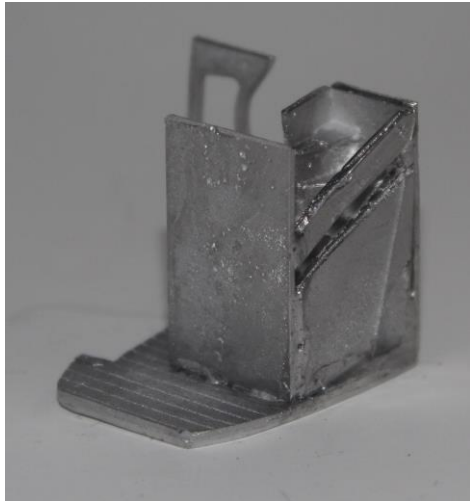


7. Shorten the bulkhead and driver partition from the top so that they fit between the ceiling and the platform. Shorten the stairs from the bottom to match.
8. Attach the bulkhead to the platform.

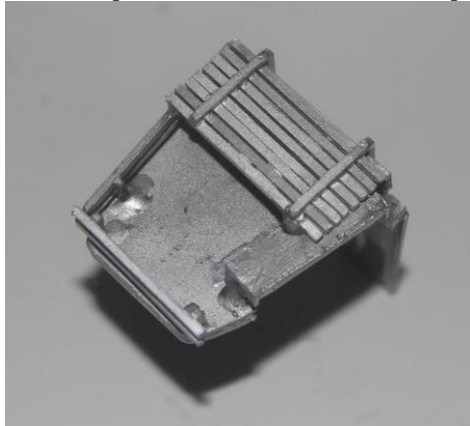


9. Attach the stairs and the driver partition.





10. With platform inverted, attach the steps, life guards and life tray.



11. Don't fix the platform assemblies or roof into the tram until you have painted and glazed the interior.

