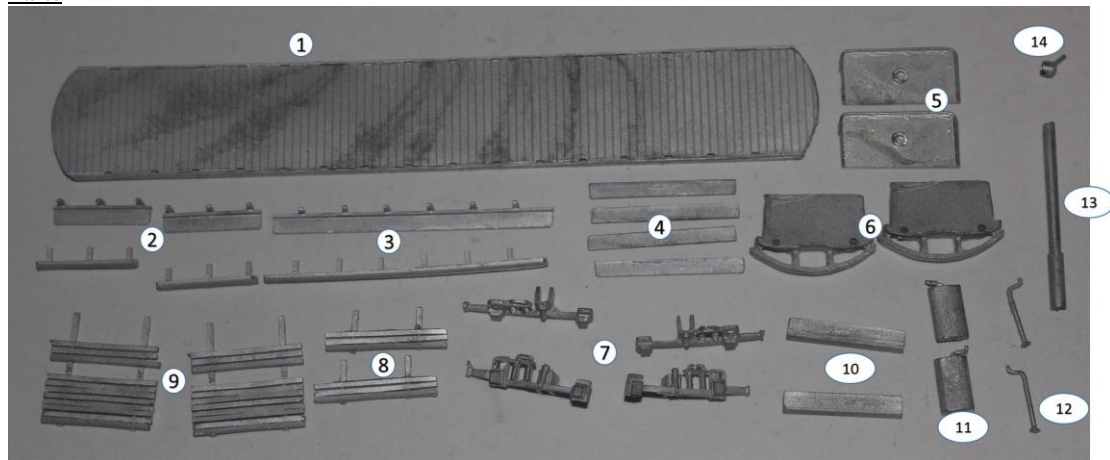


## KW Trams

### KW 026 Rothesay toastracks 11 & 12

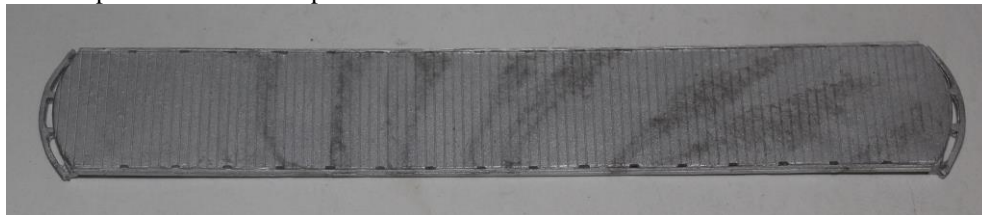
#### Parts



1.	Tram floor	x1
2.	Short step	x4
3.	Long step	x2
4.	Upper step	x4
5.	Dash panel	x2
6.	Platform end / bumper	x2
7.	Bogie side	x4
8.	Life guard	x2
9.	Life tray	x2
10.	Destination board	x2
11.	Controller	x2
12.	Handbrake	x2
13.	Trolley mast	x1
14.	Trolley top	x1

#### Build Steps

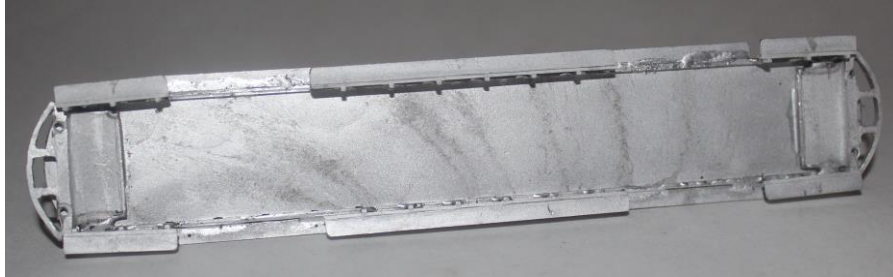
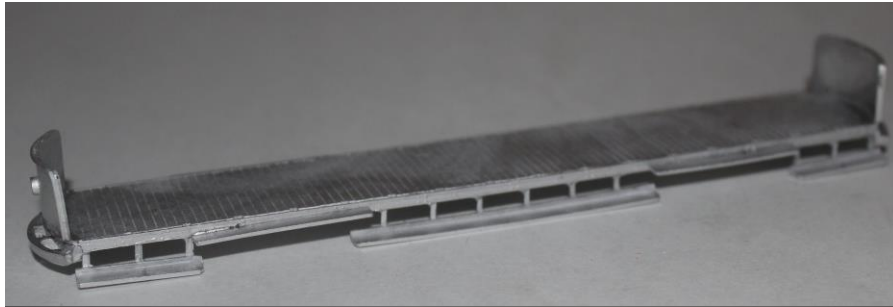
1. Fix platform ends / bumpers under the ends of the floors.



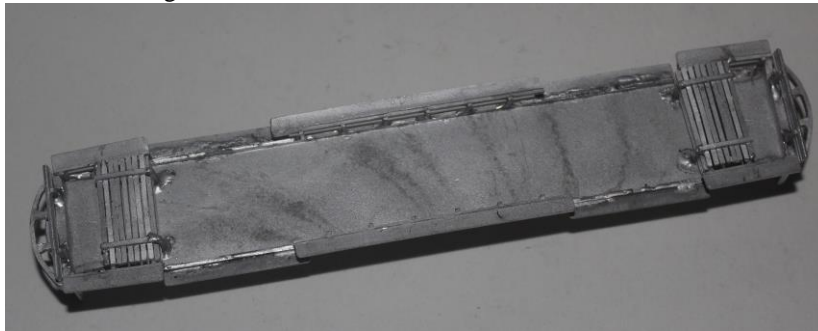
2. Carefully bend the dash panels to fit the curve of the floor and fit to floor.



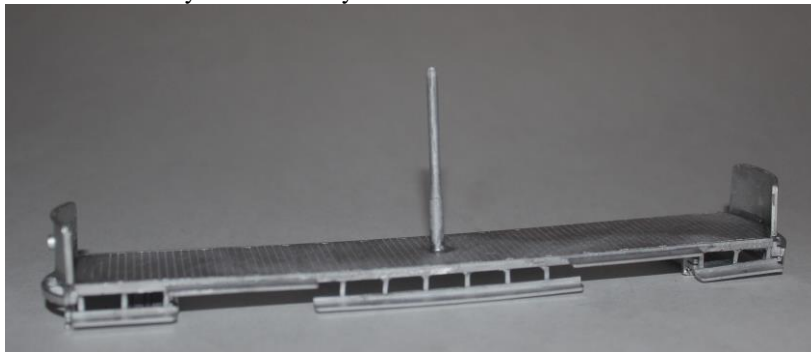
3. Fix the short steps to the underside of the edge of the floor, with the end leg flush against the platform end / bumper.
4. Fit the long step centrally to the underside of the edge of the floor.



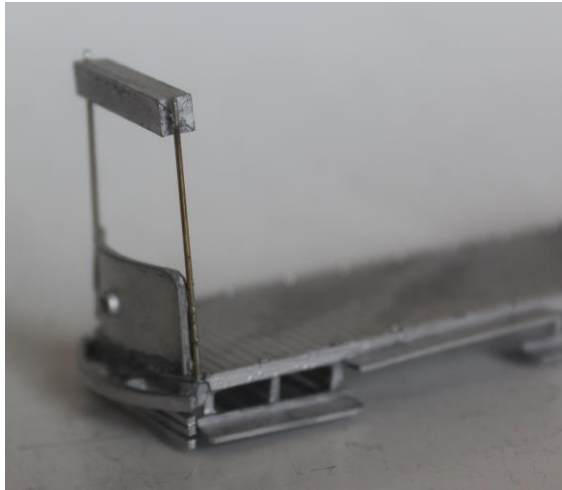
5. Fit the upper steps between the long and short steps flush with the lower edge of the floor.
6. Bend the lifetrays to 90 degrees and trim the legs, then fit level with the ends of the short steps.
7. Fit the lifeguards.



8. Fit the trolley mast centrally.



9. Cut wire to support the destinations. You will need 2 pieces of wire 32mm long for the verticals each end, and two short pieces to go horizontally each end.
10. Drill a hole in the centre of each end of the destinations to take the horizontal wires & fit.
11. Fix the long wires to the outer edges of the dash panels.
12. Fix the destination near the top of the vertical wires.



13. Bend the seats and solder the inner and outer lower sections together.
14. Fit the seats into the holes in the floor (the lower sides slope inwards).
15. Fit the seat backs.

