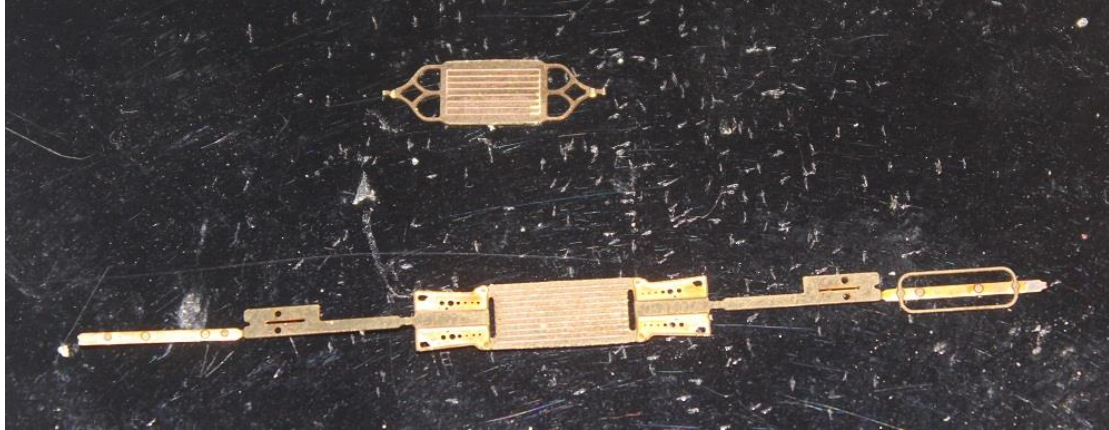


## KW Trams

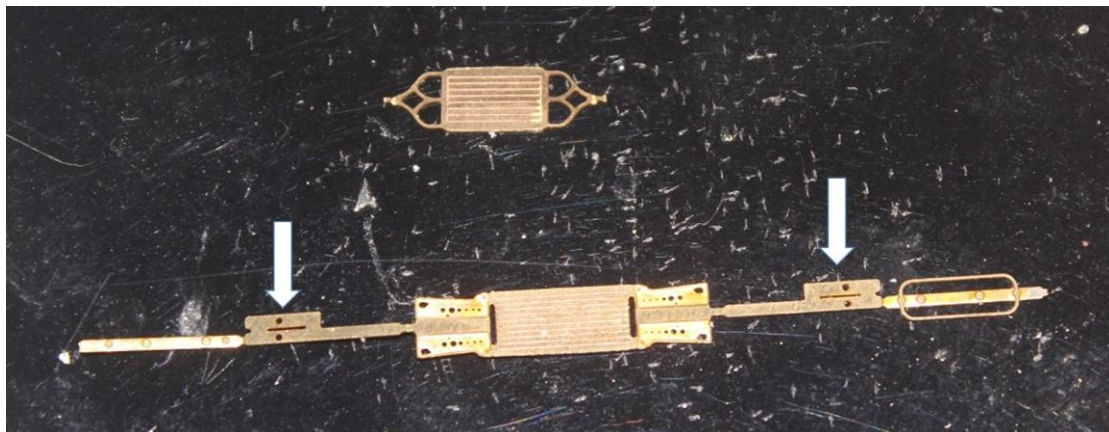
### **KW 028 Blackpool toastrack seats**

#### Build Steps

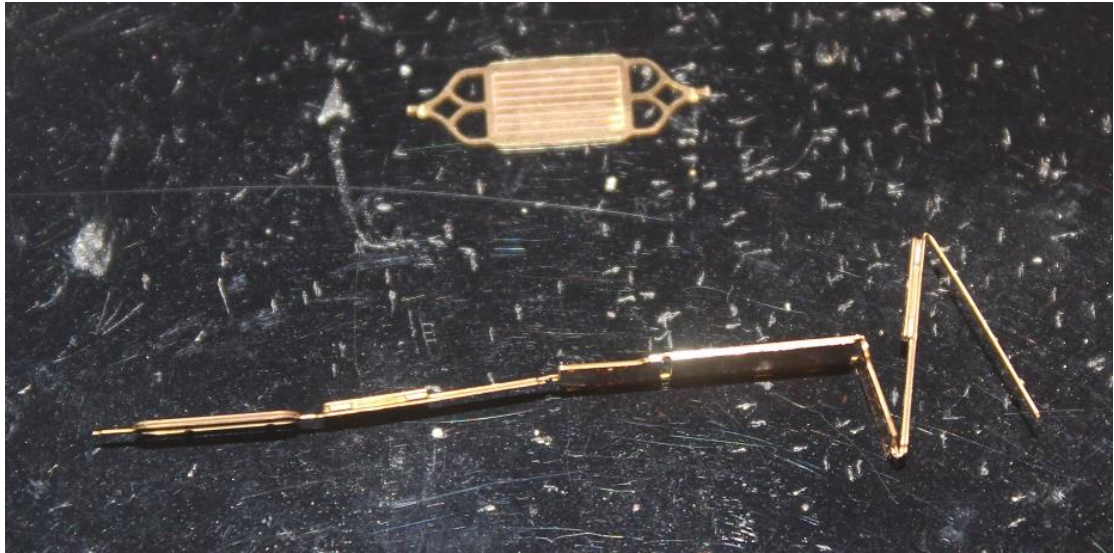
1. Carefully remove the seats and backs from the brass fret. File off any rough edges.



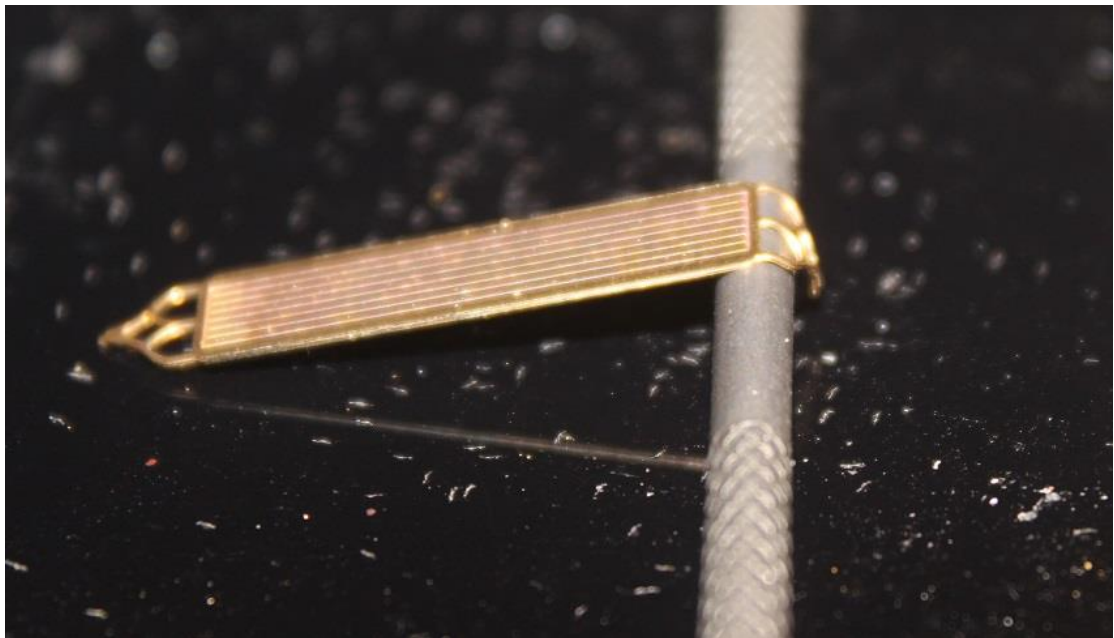
2. Carefully bend the side thickeners (these are the parts shown by the arrows) with the etched groove on the outside so that it is flat to the bar. I used a fine pair of pliers to do this.



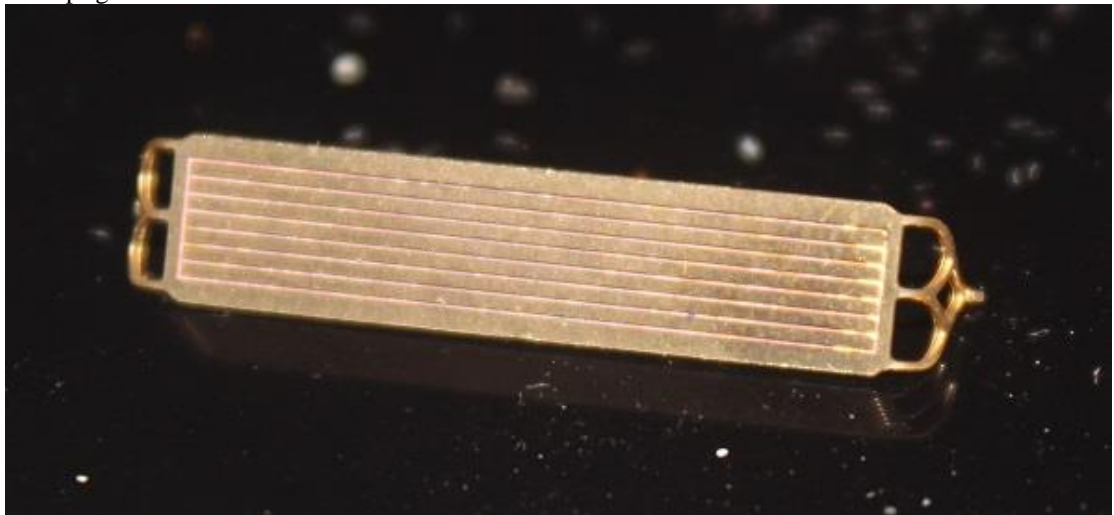
3. Gently bend the seat sides down then the next section up, then the outer piece down. This makes a “pin” at the bottom, which fits into the slot in the toastrack floor.



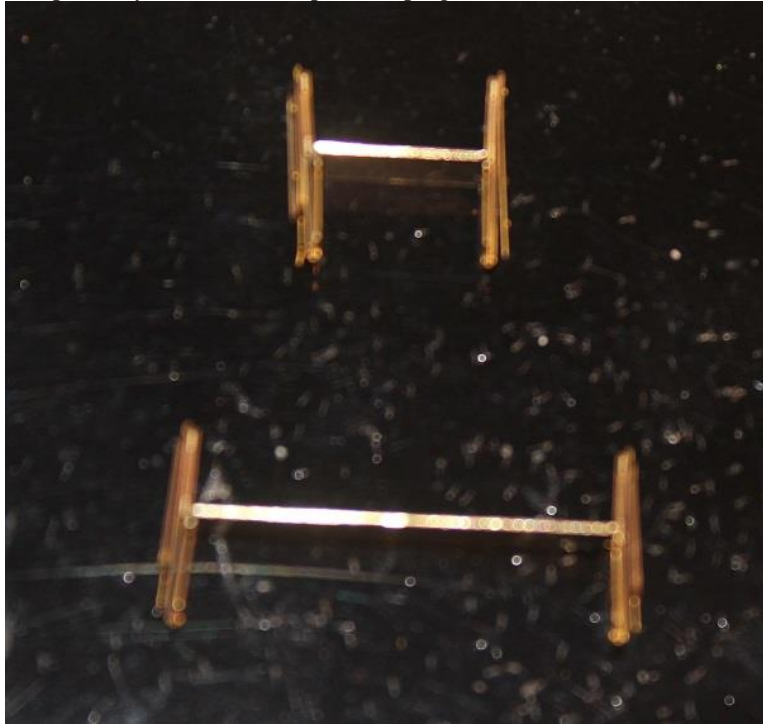
4. Carefully bend the ends of the seat backs into a curve – I used the shaft of a needle file to make the bend.



5. Carefully bend the pins at the outer ends of the seat backs outwards so that they can fit in the seat uprights.



6. To hold the seat sides together, I soldered the bottom of each side together. If making double width seats (rather than 5 width seats), then you will need to file off the locating pin on the side without the handrail as there is no hole to locate it into.
7. It may be possible to fit the seat backs so that they can turn over. If you wish to do this, you will probably want to use a spot of superglue to fix the inner and outer sides of the seat together.



8. Fit the pins on the ends of the seat backs into the holes in the sides, adjusting the bend to suit.
9. Fix the seats to the tram. On the double seats, the sides without a handrail go in the middle.

