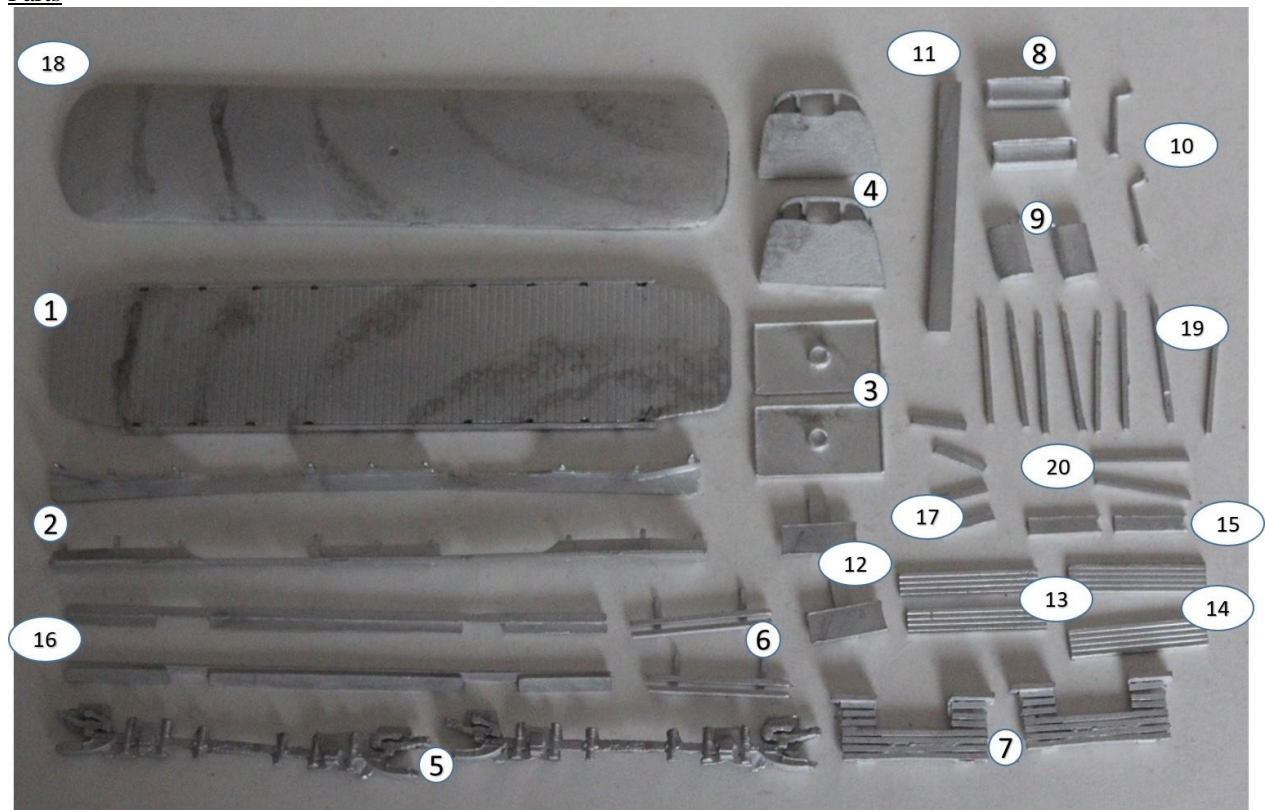


KW Trams

KW 0037 Portsmouth Toastrack.

Parts



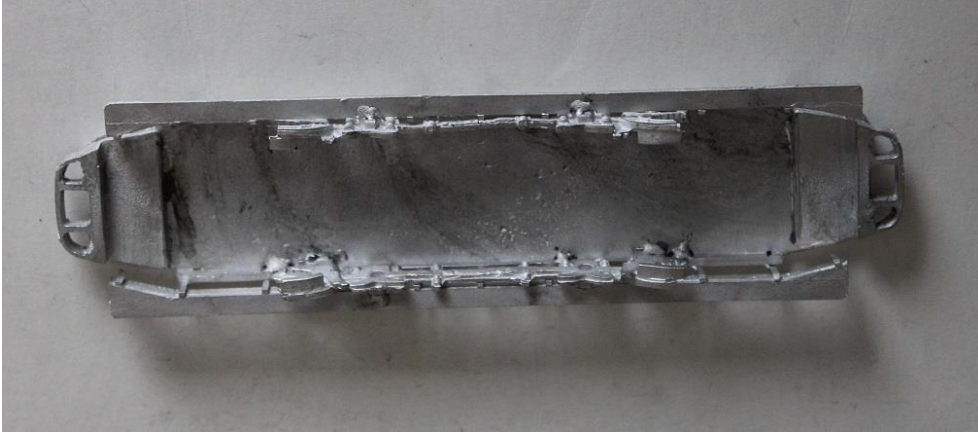
1. Tram floor	x1
2. Long step	x2
3. Dash panel	x2
4. Platform end / bumper	x2
5. Truck side	x2
6. 2 bar life guard	x2
7. Life tray	x2
8. Destination box	x2
9. Controller	x2
10. Handbrake	x2
11. Trolley plank	x1
12. Seat sides	x2
13. Seat seats	x2
14. Seat backs	x2
15. Seat top	x2
16. Step extensions	x2
17. Short step extensions	x4
18. Roof	x1
19. Roof supports	x8
20. Middle roof supports	x2

Build Steps

1. If required, fit the long step extensions centrally under each side of the floor with the gaps uppermost.
2. Fit the truck sides under the step extensions with the upper extension sections in the gaps.
3. Fit the steps to the sides of the truck sides / floor sides or step extension if fitted.



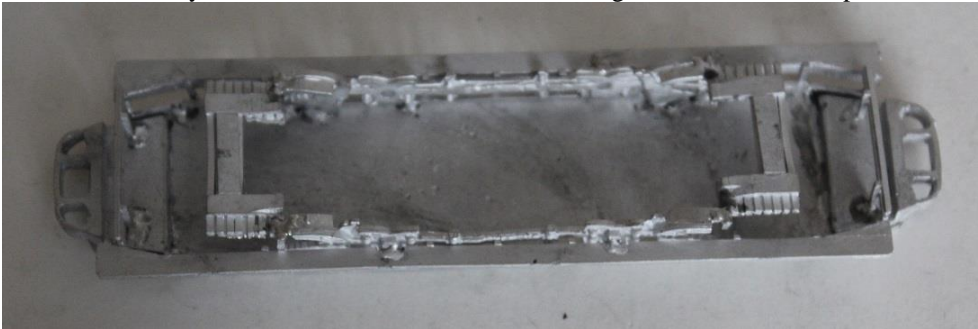
4. Fix platform ends / bumpers under the ends of the floors, flush with the front end of the floor.



5. Fit the short step extensions to the bumpers to provide a ledge to fit the end step support to.



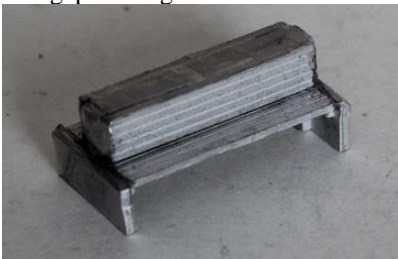
6. Fit the lifetrays to the ends of the truck sides and lifeguards under the bumper.



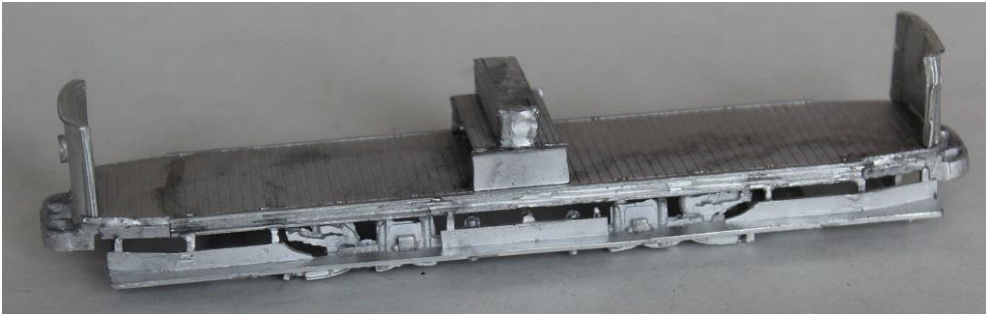
7. Carefully bend the dash panels to fit the end of the floor and fit to floor.



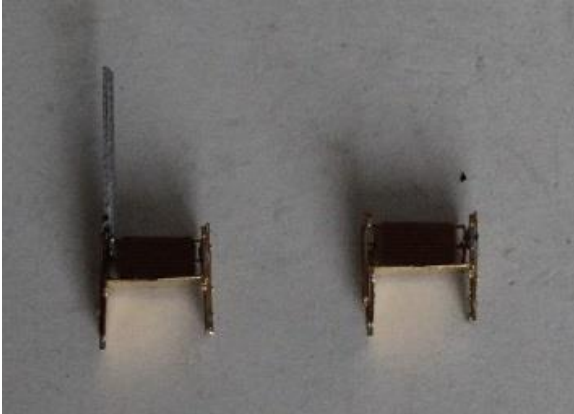
8. Make up the centre seat. The seat backs are wider than the seats. The seats fit on the ledge on the side and against the vertical bar. The backs then fit on top of the edge of the seat and against the bar. The seat tops then need to be trimmed to fit in the gap leaving room for the mast in the middle.



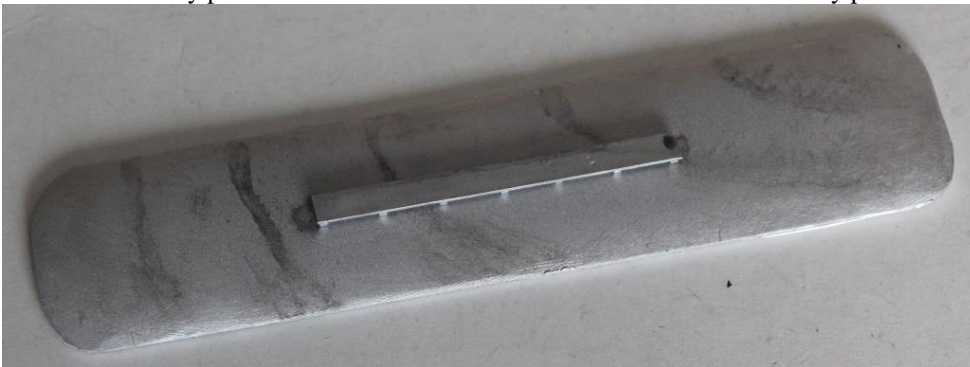
9. Fit the seat to the centre of the floor.



10. Bend the seats and solder the inner and outer lower sections together. Fit the seat backs. (see separate build instructions for more details). Depending on whether you want to try to make the seat backs move, fit the roof supports to the seats. If you are going to fix the seat backs in position, then fit the backs, then trim the roof supports so that they fit on the inside of the seat (on the outer side). They fit on alternate seats. If you want to make the seat backs move, then fix the roof supports before you fit the seat backs.



11. Fit the seats into the holes in the floor. The roof supports go on the end seats and the 3rd seats from the end. Fit the middle roof supports to the ends of the middle seat.
12. Fix the trolley plank to the centre of the roof and drill a hole for the trolley pole.



13. Lay the roof upside down on the workbench and place the tram on top, then solder the roof supports to the roof.

