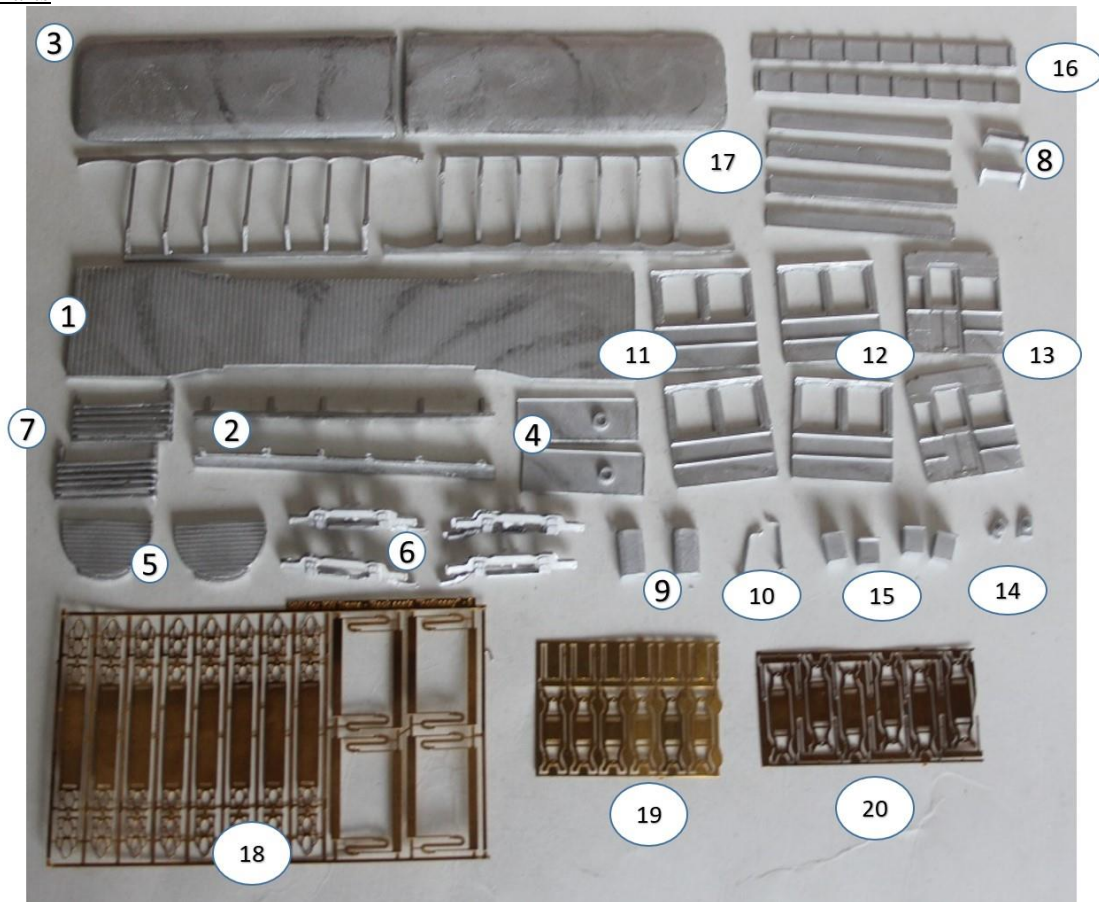


KW Trams

KW 045 Rothesay covered toastrack cars

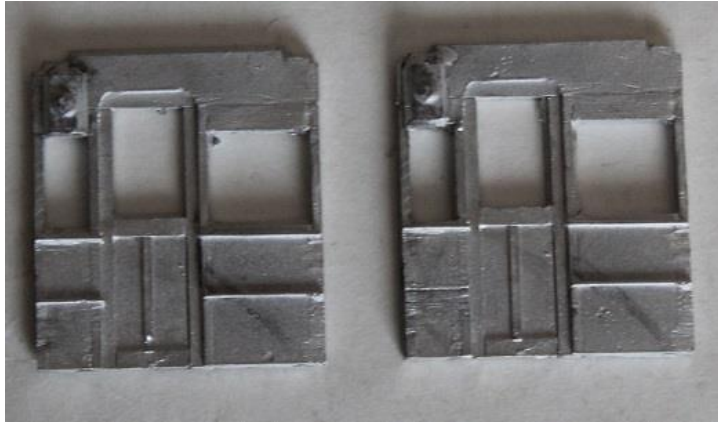
Parts



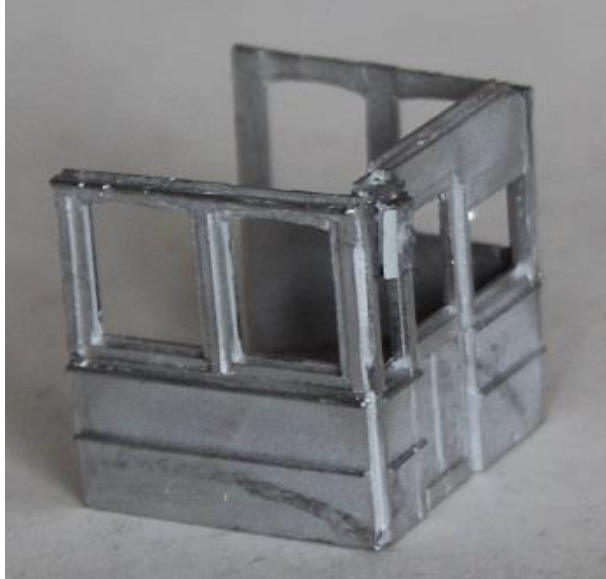
1. Tram floor	x1
2. Long step	x2
3. Roof half	x2
4. Dash panel	x2
5. Platform end / bumper	x2
6. Bogie side	x4
7. Life tray	x2
8. Destination box	x2
9. Controller	x2
10. Handbrake	x2
11. Enclosed sides left	x2
12. Enclosed sides right	x2
13. Bulkhead	x2
14. Bulkhead lights	x2
15. Platform boxes	x4
16. Trolley plank half	x2
17. Roof advert boards	x4
18. Centre brass seats	x7
19. Single brass seats	x6
20. Double brass seats	x6

Build Steps

1. Attach bulkhead lights to bulkheads, above the small, left hand window.



2. Fix one bulkhead to a left and right hand side squarely and repeat for second set.



3. Fit the two assemblies to the ends of the floor.



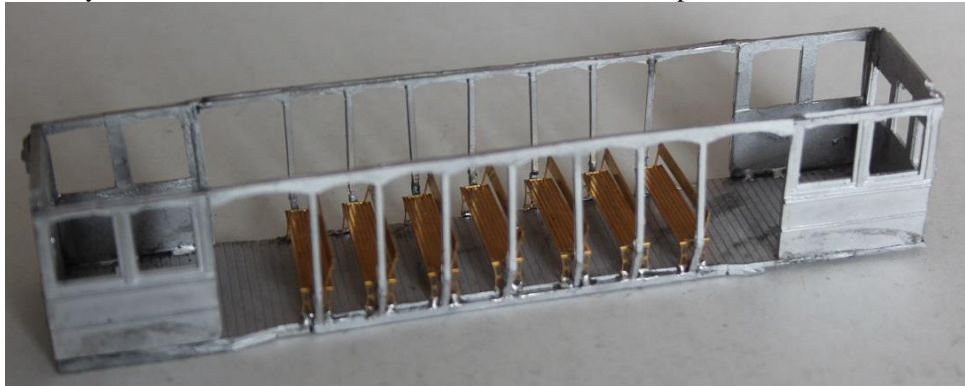
4. Fit the side into the gap between the end assemblies with the bottom in the cut out in the floor.



5. The centre (full width) seats need the outer end panels removing,

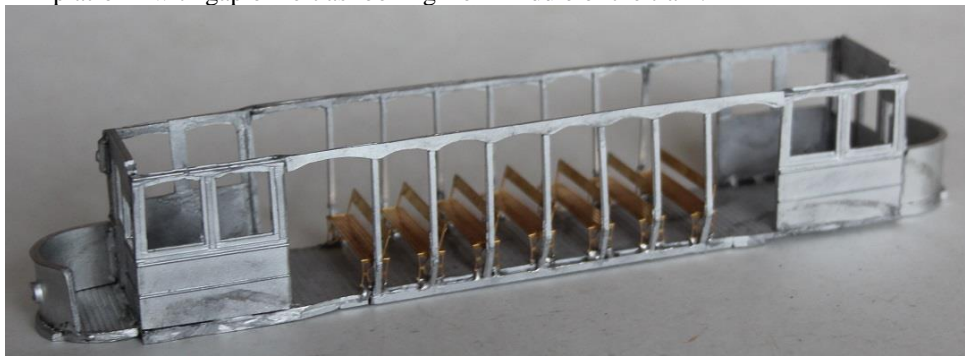


6. they should then be assembled and fitted between the side pillars.

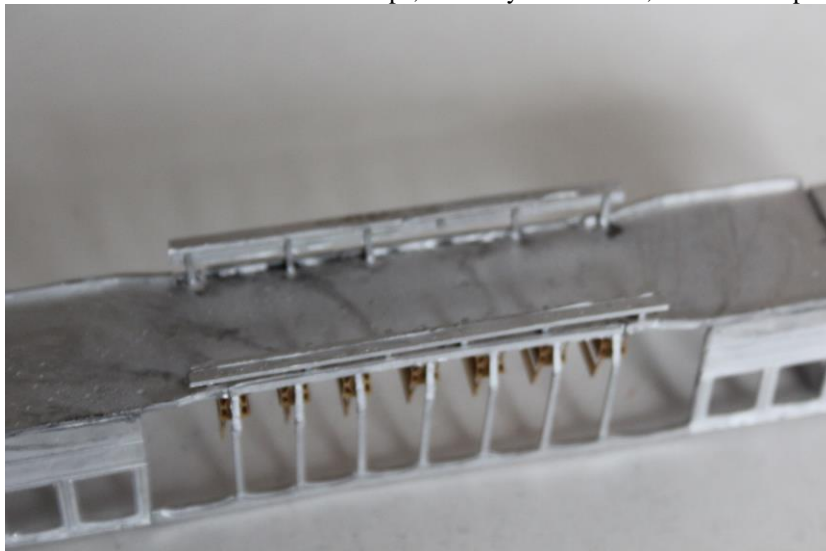


7. Attach platforms flush to the bottom edges of bulkheads and centrally located.

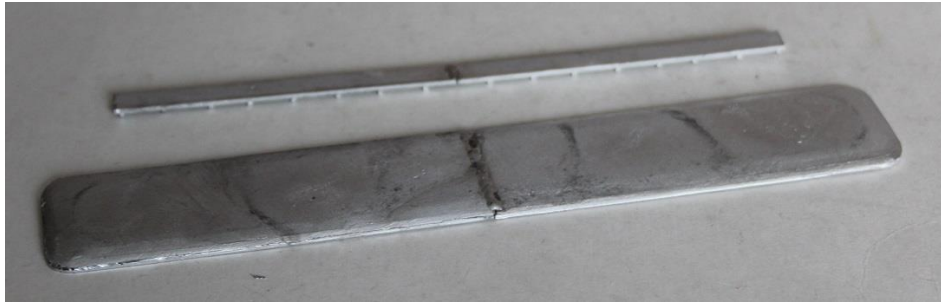
8. Gently bend the dash panels to fit the curve of the platform, trim to length if required and fit to platform with gap on left as looking from middle of the tram.



9. Turn model over and fix the steps, centrally to the sides, behind the lip on the floor.



10. Fix the two halves of the roof together. Fit the two halves of the trolley plank together.



11. Fit the two together and fit the destination boxes to the ends of the roof.

