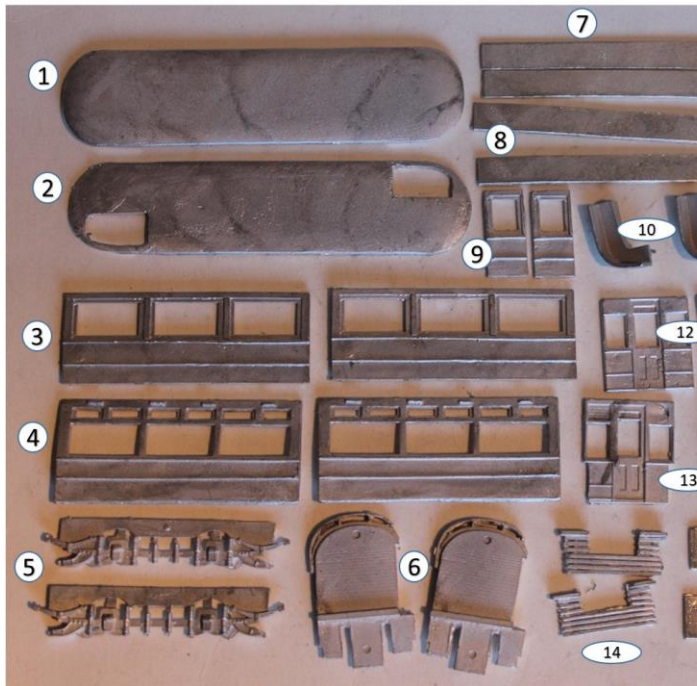


KW Trams

KW 046 Birmingham 21-70

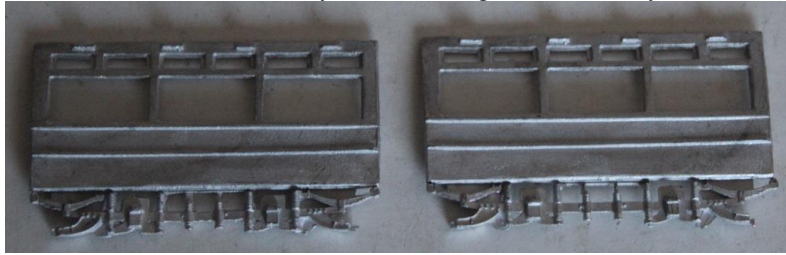
Parts



1. Roof	x1
2. Floor / ceiling	x1
3. Upper side	x2
4. Lower side	x2
5. Truck side	x2
6. Platform	x2
7. Open top upper sides	x2
8. Balcony ends	x2
9. Upper side extensions	x2
10. Balcony seats	x2
11. Stair partitions	x2
12. Upper bulkhead	x2
13. Lower bulkhead	x2
14. Lifetray	x2
15. Trolley mast	x1
16. Destination number box	x2
17. Lamp standards	x2
18. Trolley plank	x1
19. Resistance box	x2
20. Upper deck used ticket boxes	x2
21. Side destination boxes	x2
22. Stairs	x2
23. Side destination board	x2
24. Controller	x2
25. Handbrake	x2
26. Front lifeguard	x2
27. Side lifeguard	x2
28. Unvestibuled dash	x2
29. Vestibuled dash	x2
30. Vestibule	x2
31. Step	x2

Build Steps

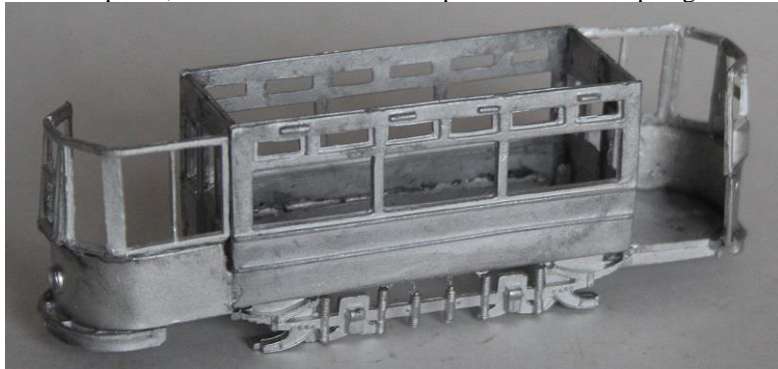
1. Attach truck sides to body sides ensuring exact centrality.



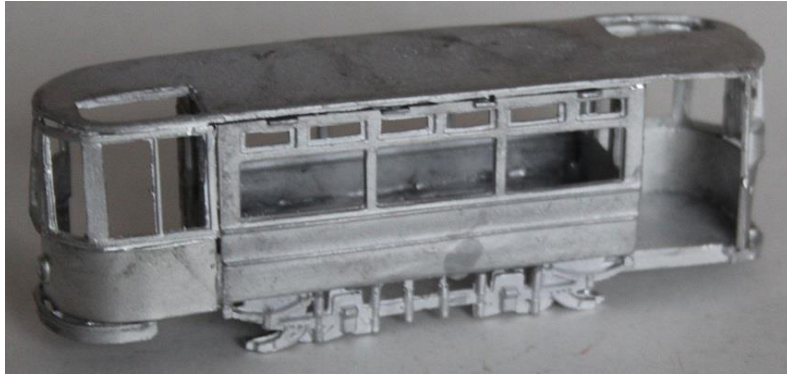
2. Fix bulk heads to sides squarely and marry subassemblies to produce a box effect.



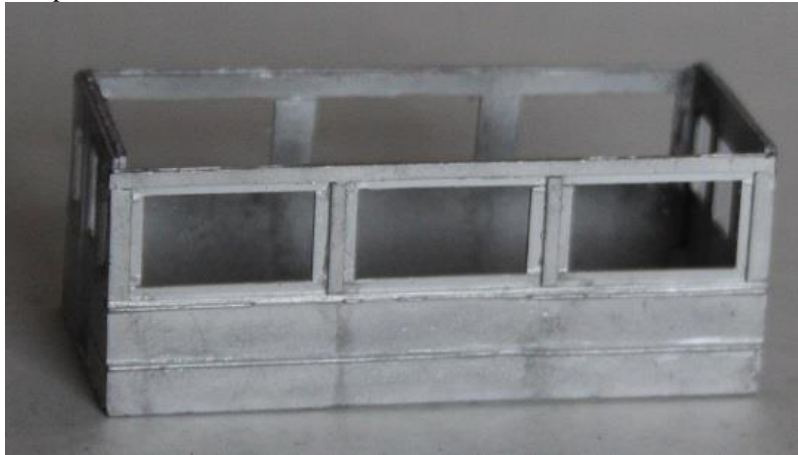
3. With model inverted, attach platforms to bottom edges of bulkheads; ensuring the lip is within the body and not on the platform.
4. Gently bend the dash panels to fit the shape of the platform front, cut to length and fit to platform.
Note, if fitting the platform vestibule, use the dashes with the smooth top edges. If building a car without the vestibule, use the dash with beading on the top.
5. If required, bend the vestibule to shape and fit to the top edge of the dash.



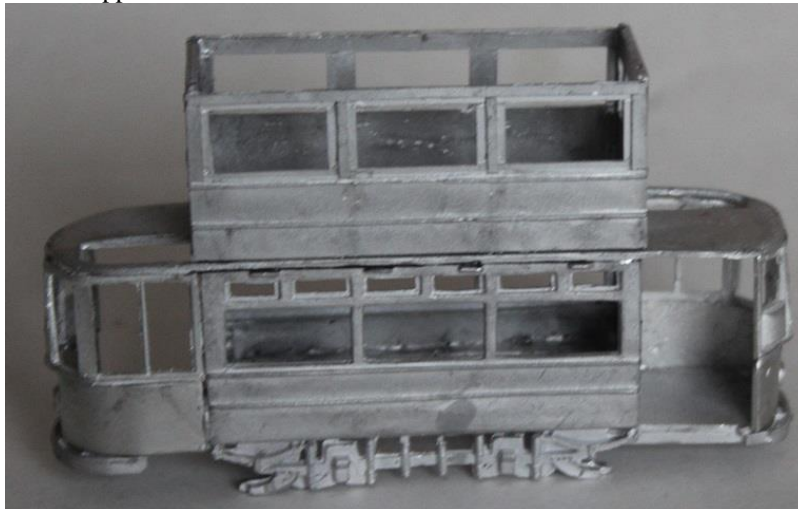
6. Fix the ceiling/upper deck floor piece.



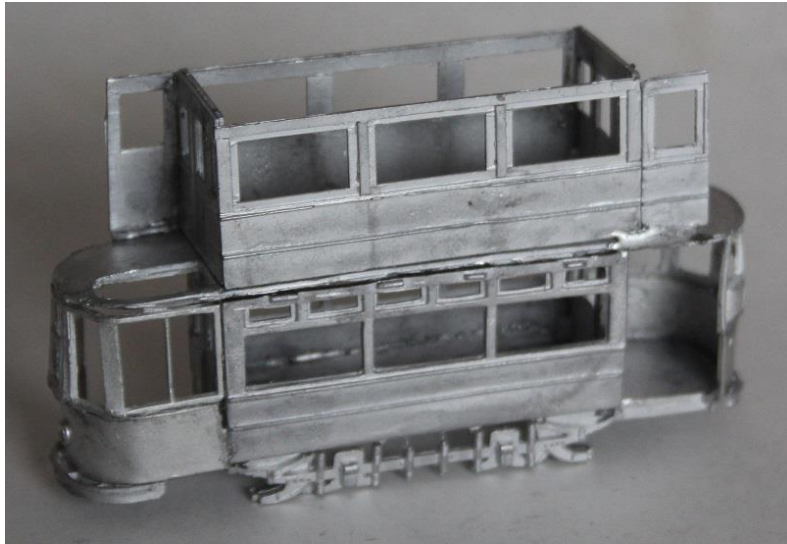
7. If building the open top version, fit the upper deck sides centrally. Then carefully bend the balcony ends to shape, cut to length and fit. Then fit the trolley mast and light standards if required.
8. If building the top covered version, fix upper bulkheads to upper sides and marry subassemblies to produce a box effect.



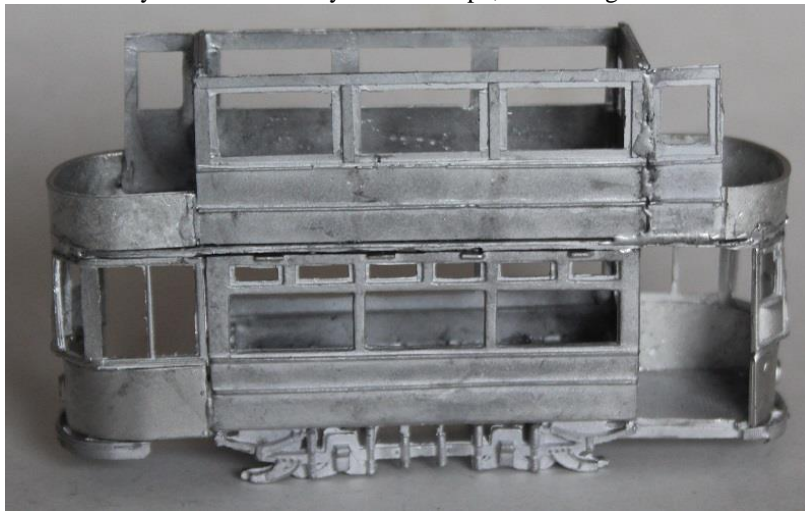
9. Fit upper deck to centre of floor.



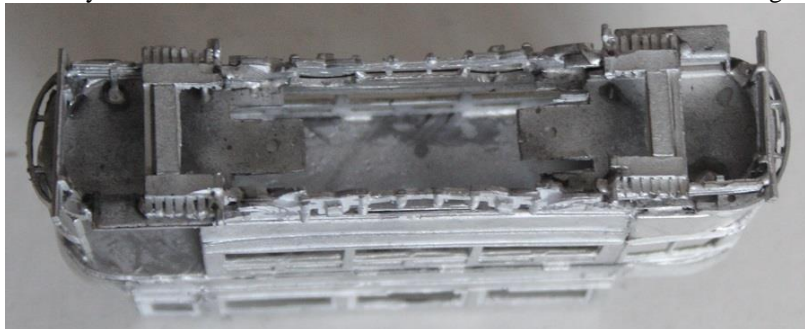
10. Fit the upper deck side extensions one on each side on the right of the upper side.



11. Carefully bend the balcony ends to shape, cut to length and fit.



12. Turn model over and fit the steps and the life trays attached to the front edge of the truck sides so they do not interfere with the mechanism. Fit the side and front lifeguards.



13. Fit the trolley plank to the centre of the roof.



