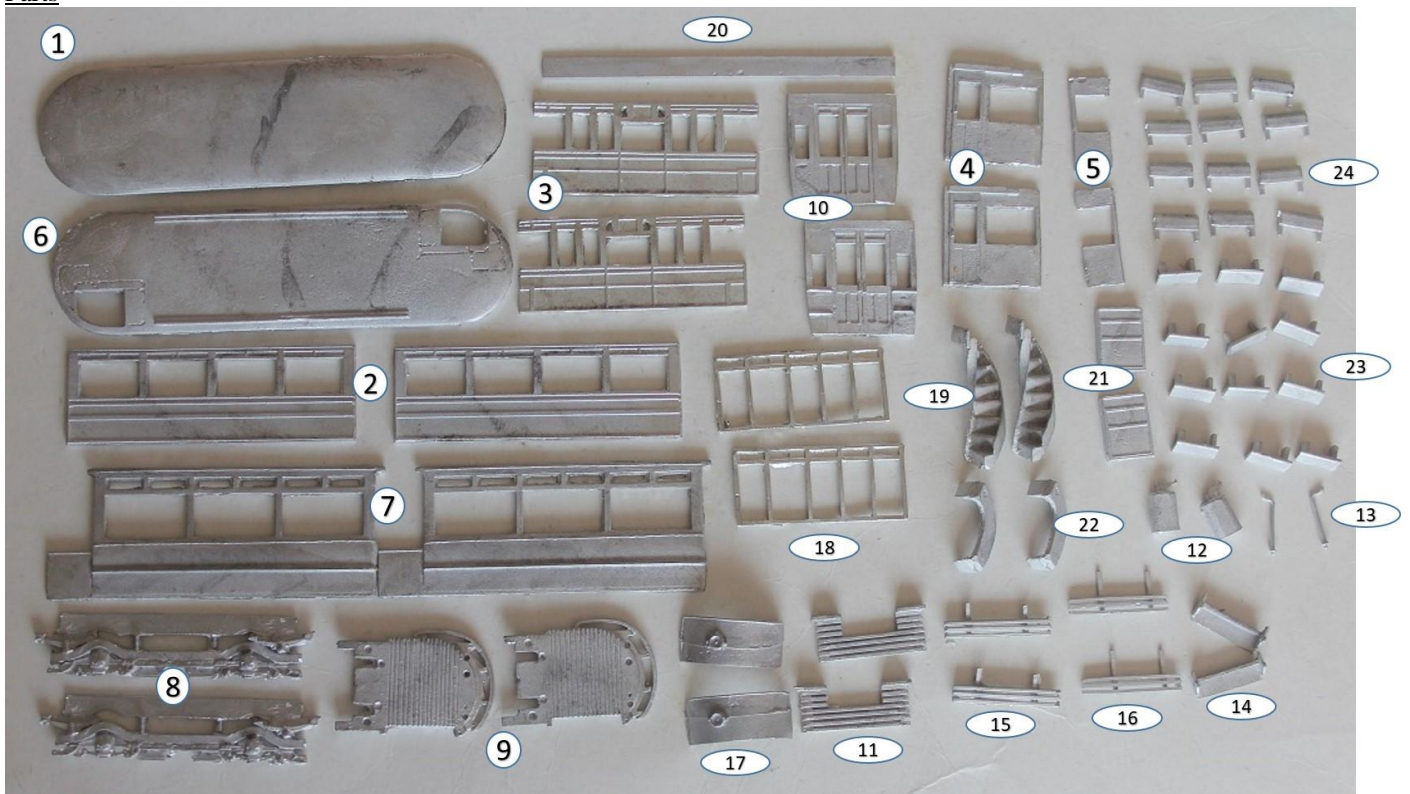


KW Trams

KW 053 Bellamy reconditioned cars

Parts



Roof	x2
Upper side	x2
Upper ends	x2
Upper deck stair partition large	x2
Upper deck stair partition small	x2
Floor	x1
Lower side	x2
Truck side - EMB	x2
Platform	x2
Lower bulkhead	x2
Lifetray	x2
Controller	x2
Handbrake	x2
Step	x2
Lifeguards	x2
Side lifeguards	x2
Dash with headlamp	x2
Driver vestibule	x2
Stairs	x2
Trolley plank	x1
Destination boxes	x2
Balcony seats	x2
Upper seats	x12
Upper seat backs	x12

Build Steps

1. Attach the truck sides to body sides ensuring exact centrality.



2. Fix bulk heads to sides squarely and marry subassemblies to produce a box effect.



3. With model inverted, attach platforms to bottom edges of bulkheads.

4. Fit the dash panels.



5. Fit the upper deck floor.



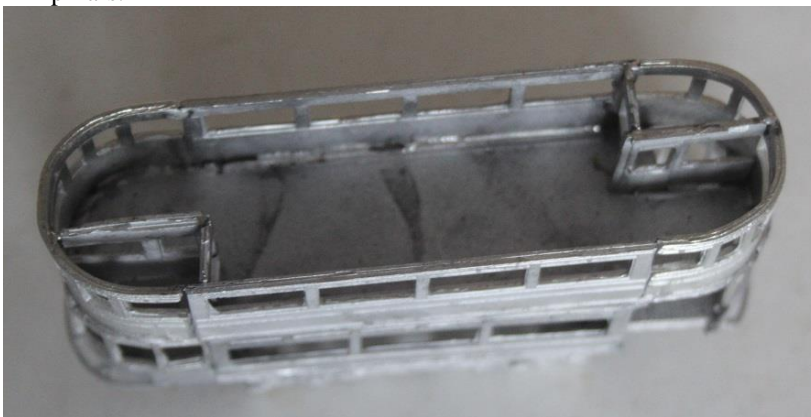
6. Bend the driver vestibules to the correct shape and fit between the top of the dash and the bottom of the floor.



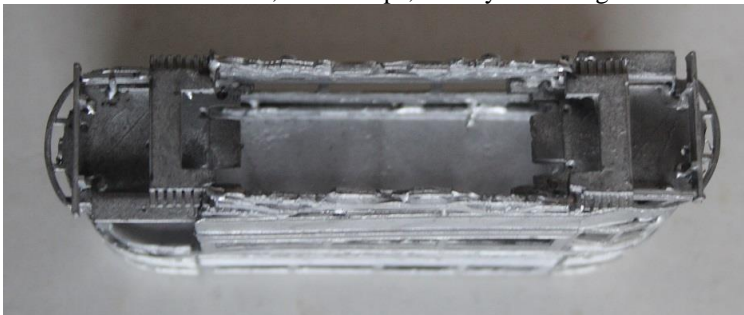
7. Fit the upper deck sides to the upper deck floor. Bend the upper deck ends to match the shape of the end of the floor and fit.



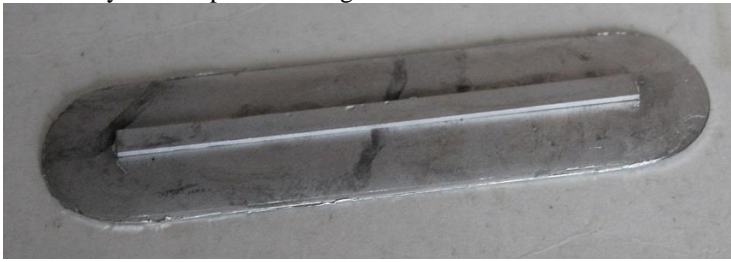
8. Cut the upper deck stair partitions to the correct size and fit so that they match to the window pillars.



9. With model inverted, fit the steps, lifetrays and lifeguards.



10. Fit the trolley plank centrally to the roof, but do not attach the roof to the rest of the model until you have painted and glazed the interior.



11. Fit the seat backs to the seats at a slight angle.

