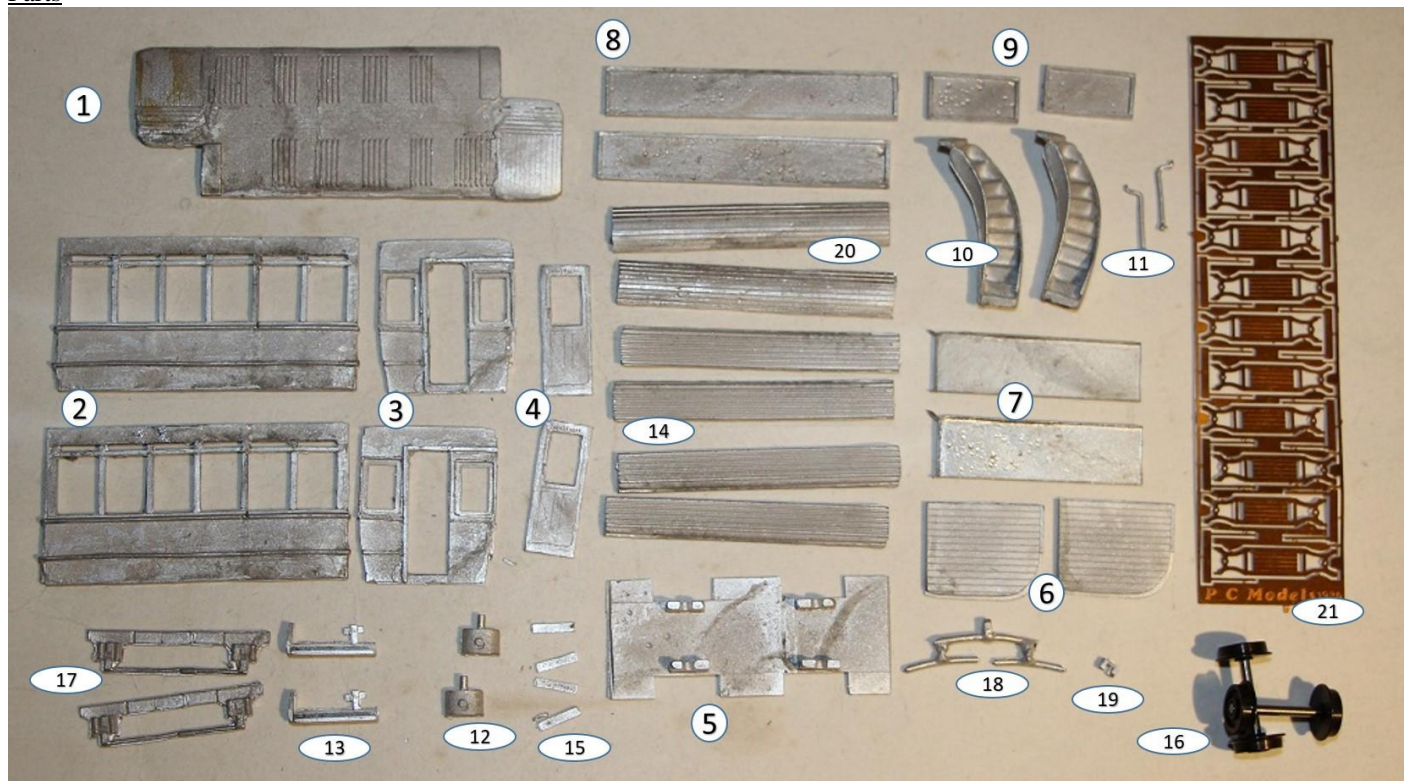


KW Trams

KW 060 6tg Six Window with Toplights & Knifeboard Seats

Parts



1.	Floor / ceiling	x1
2.	Lower side	x2
3.	Bulkhead	x2
4.	Bulkhead door	x2
5.	Floor	x1
6.	Platform	x2
7.	Dash	x2
8.	Long decency panels	x2
9.	Short decency panels	x2
10.	Stairs	x2
11.	Handbrake	x2
12.	Bulkhead lamp	x2
13.	Step	x2
14.	Lower deck seats	x4
15.	Axle retainers	x4
16.	Axles & wheels	x2
17.	Truck sides	x2
18.	Swingle assembly	x1
19.	Coupling	x1
20.	Turtle roof	x2
21.	Etched brass double seats	x12
22.	Etched brass single seats	x2

Build Steps

1. Fit the bulkhead doors and lights to the bulkheads.
2. Attach the truck sides centrally to the body sides.

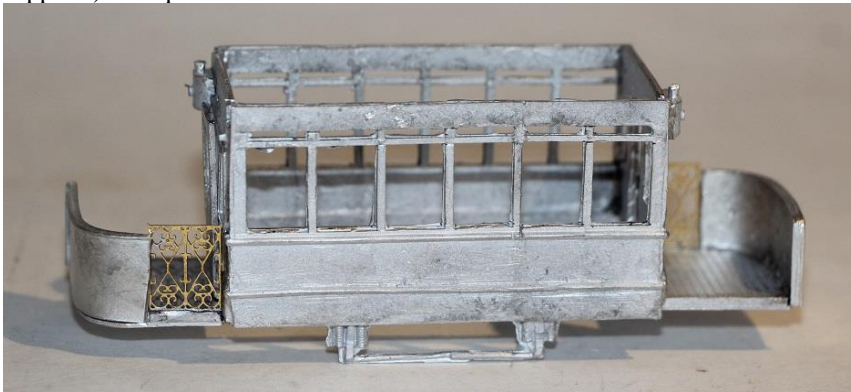


3. Fix bulk heads to sides squarely and marry subassemblies to produce a box effect.

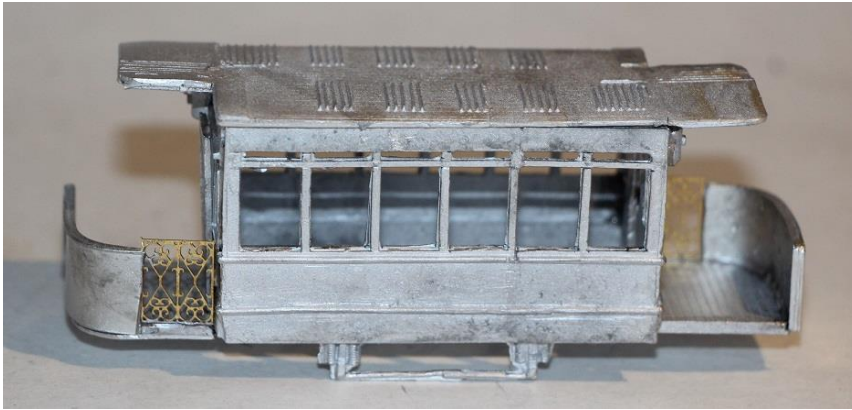


4. With model inverted, attach platforms to bottom edges of bulkheads; with the platform mounted to the left of the car and the outer edge in line with the outer edge of the bulkhead.

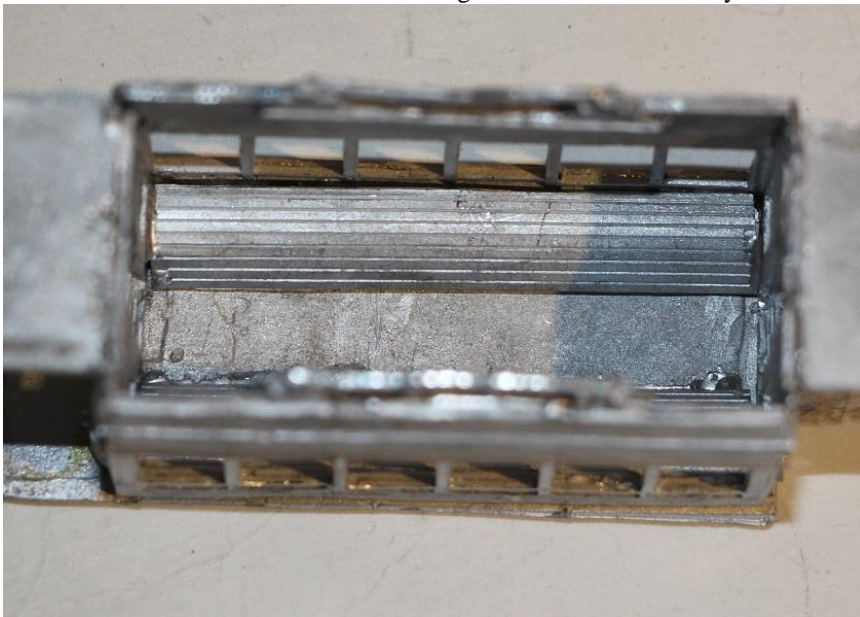
5. Gently bend the dash panels to fit the shape of the platform front, cut to length and fit to platform in the cut out in the front edge of the platform. Fit any under-stair gates, bars etc. (not supplied) as required.



6. Fit the ceiling/upper deck floor.



7. Trim the turtle back roof curves to length and fit inside the body.



8. Fix the lower deck seat backs and seat bottoms in place unless you want to paint them and the interior first.



9. Fit the stairs unless you wish to paint them first.



10. Fit the steps to the edges of the platforms. Fit the rear coupler to the lower edge of the rear platform.



11. Make up handrails etc from wire (not included).



14. Fit the wheels and fix in place using the axle retainers.

