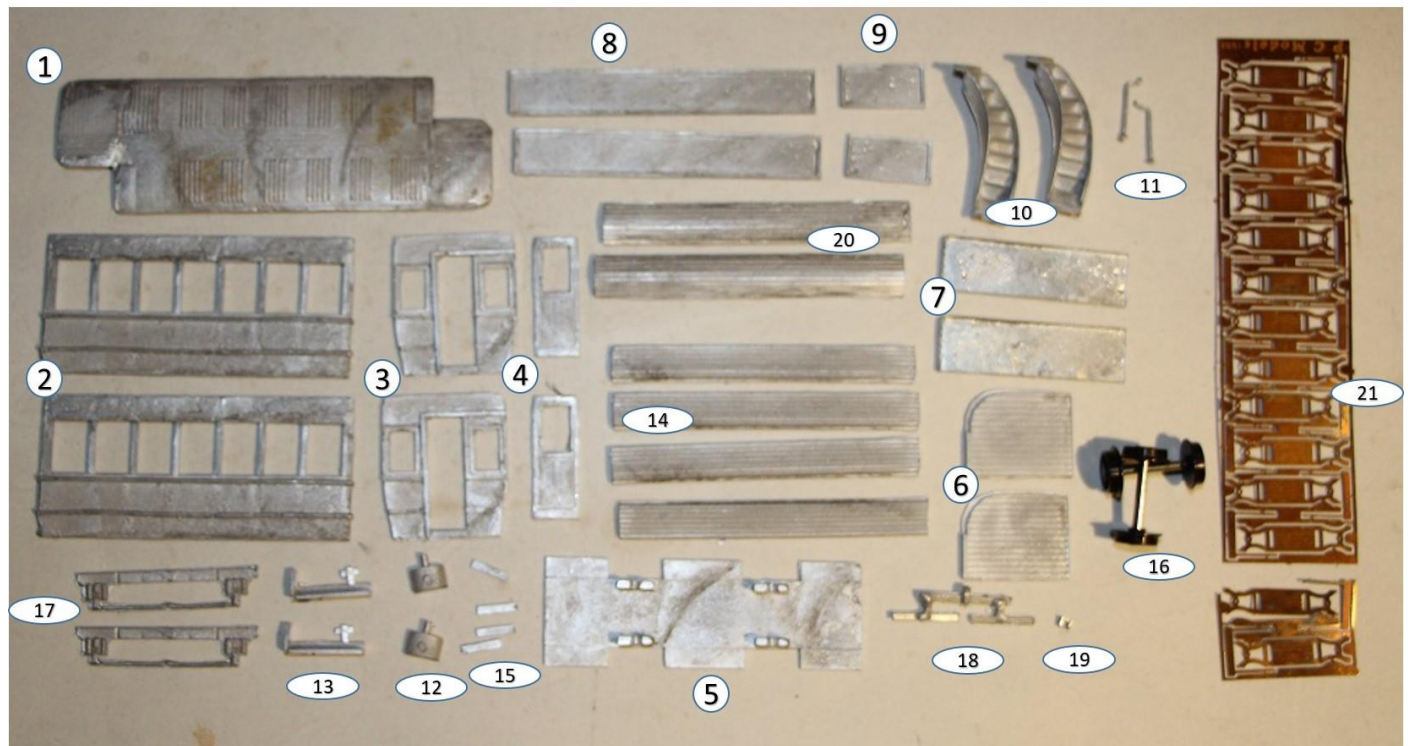


## KW Trams

### **KW 060 7sg Seven Window with Straight Tops & Knifeboard Seats**

#### Parts



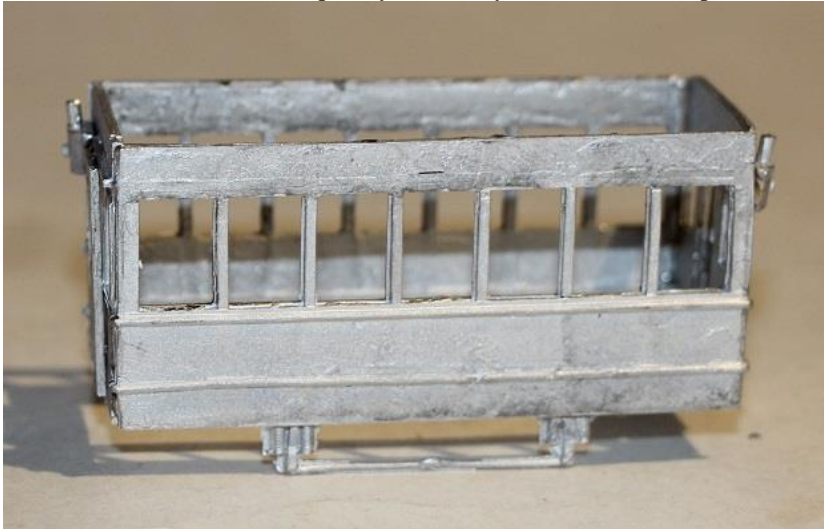
|     |                           |     |
|-----|---------------------------|-----|
| 1.  | Floor / ceiling           | x1  |
| 2.  | Lower side                | x2  |
| 3.  | Bulkhead                  | x2  |
| 4.  | Bulkhead door             | x2  |
| 5.  | Floor                     | x1  |
| 6.  | Platform                  | x2  |
| 7.  | Dash                      | x2  |
| 8.  | Long decency panels       | x2  |
| 9.  | Short decency panels      | x2  |
| 10. | Stairs                    | x2  |
| 11. | Handbrake                 | x2  |
| 12. | Bulkhead lamp             | x2  |
| 13. | Step                      | x2  |
| 14. | Lower deck seats          | x4  |
| 15. | Axle retainers            | x4  |
| 16. | Axles & wheels            | x2  |
| 17. | Truck sides               | x2  |
| 18. | Swingle assembly          | x1  |
| 19. | Coupling                  | x1  |
| 20. | Turtle roof               | x2  |
| 21. | Etched brass double seats | x12 |
| 22. | Etched brass single seats | x2  |

#### Build Steps

1. Fit the bulkhead doors and lights to the bulkheads.
2. Attach the truck sides centrally to the body sides.



3. Fix bulk heads to sides squarely and marry subassemblies to produce a box effect.

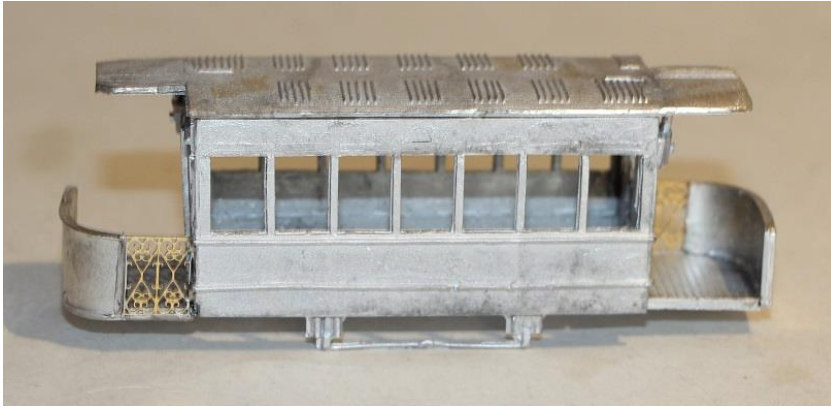


4. With model inverted, attach platforms to bottom edges of bulkheads; with the platform mounted to the left of the car and the outer edge in line with the outer edge of the bulkhead.

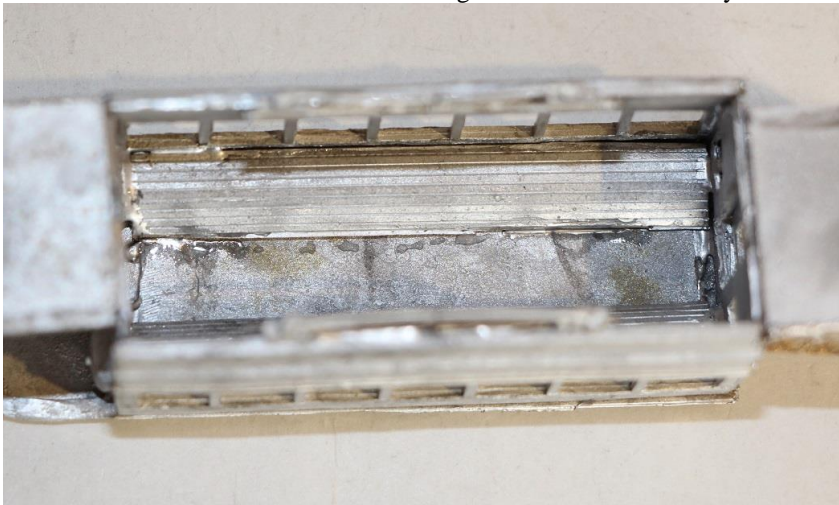
5. Gently bend the dash panels to fit the shape of the platform front, cut to length and fit to platform in the cut out in the front edge of the platform. Fit any under-stair gates, bars etc. (not supplied) as required.



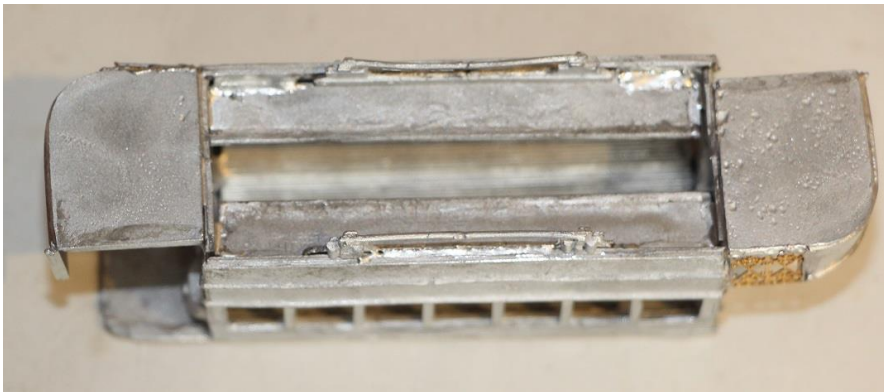
6. Fit the ceiling/upper deck floor.



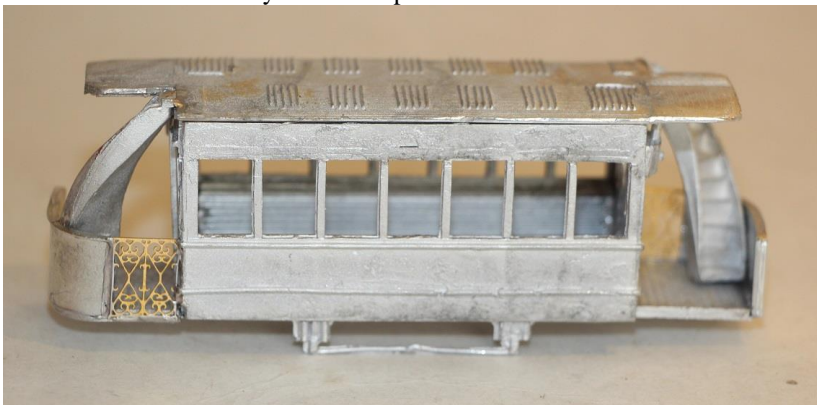
7. Trim the turtle back roof curves to length and fit inside the body.



8. Fix the lower deck seat backs and seat bottoms in place unless you want to paint them and the interior first.



9. Fit the stairs unless you wish to paint them first.



10. Fit the steps to the edges of the platforms. Fit the rear coupler to the lower edge of the rear platform.



11. Make up handrails etc from wire (not included).

