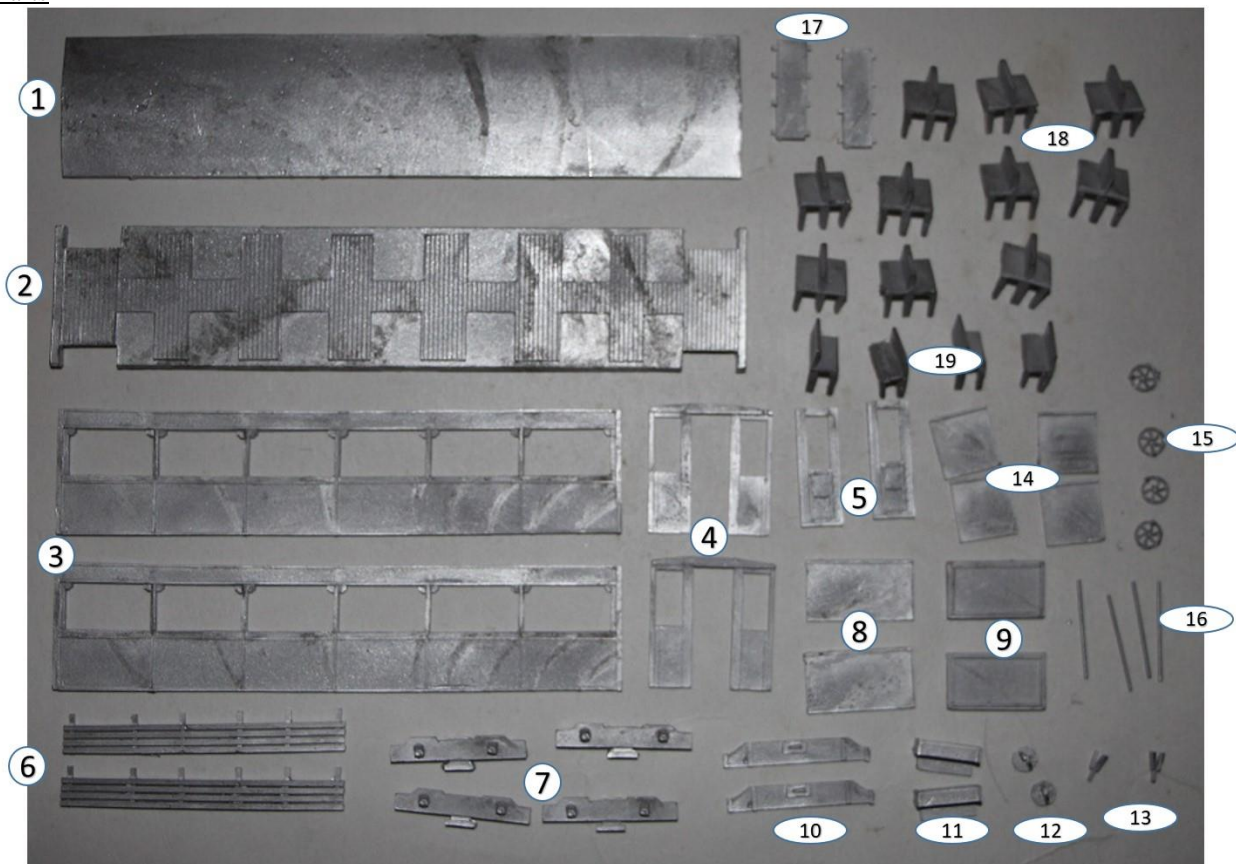


KW Trams

KW 056 Great Orme

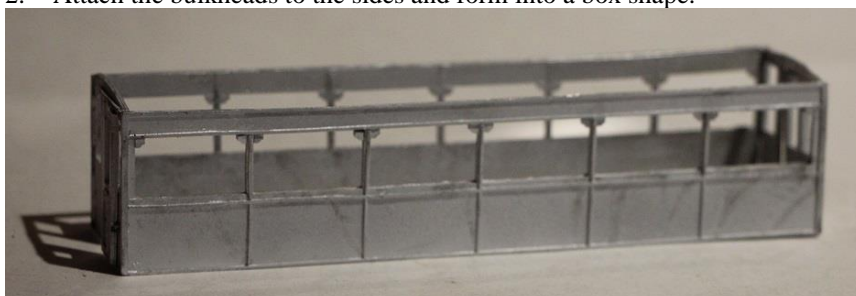
Parts



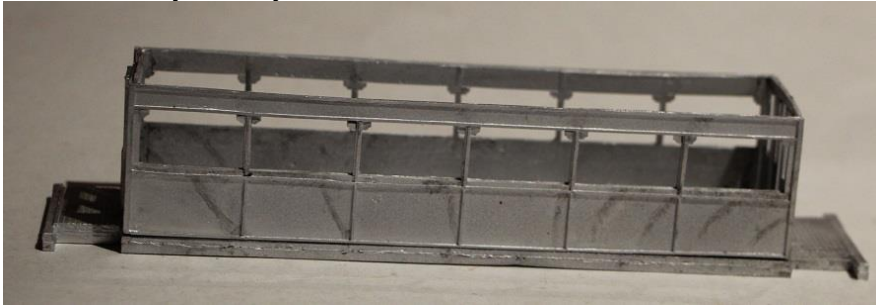
1.	Roof	x1
2.	Floor	x1
3.	Side	x2
4.	Bulkhead	x2
5.	Bulkhead door	x2
6.	Side lifeguard	x2
7.	Bogie side	x4
8.	Dash	x2
9.	Dash box	x2
10.	Bumper	x2
11.	Step	x2
12.	Coupling	x2
13.	Coupling support	x2
14.	Platform doors	x4
15.	Brake wheels	x4
16.	Brake posts	x4
17.	Trolley plank	x2
18.	Back to back seat	x10
19.	Corner seat	x4

Build Steps

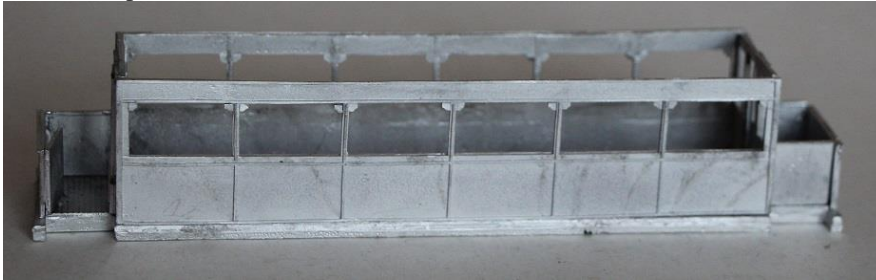
1. Fit the bulkhead doors.
2. Attach the bulkheads to the sides and form into a box shape.



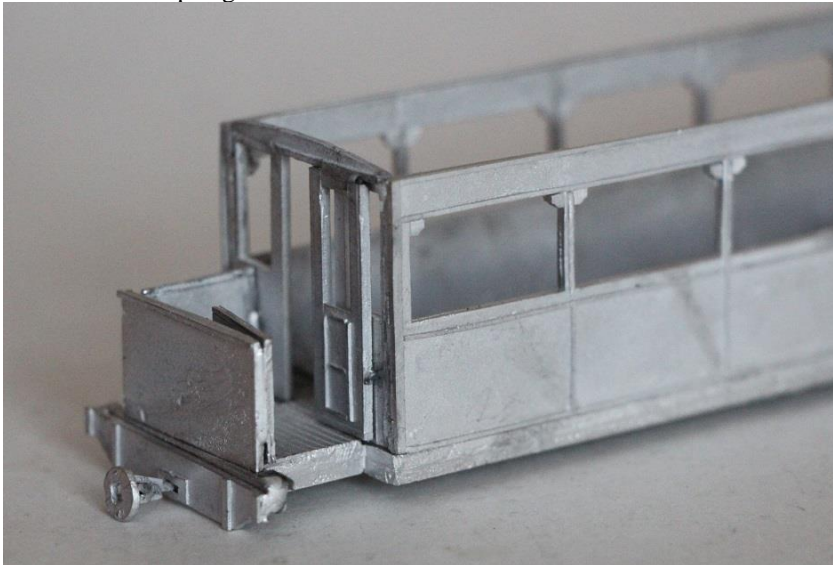
3. Fix the body centrally to the floor.



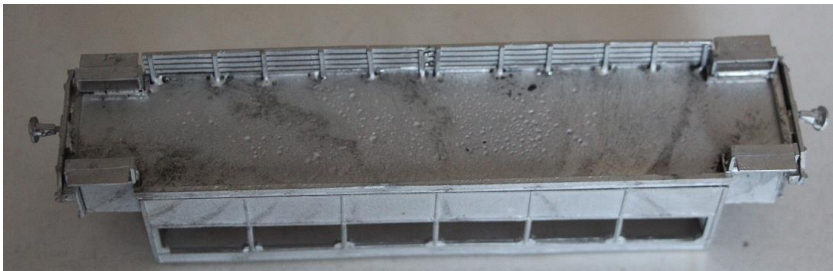
4. Fit the dash flush to the ribbing on the end of the platform.
5. Fit the platform doors



6. Fix the coupling to the coupling support, then fit the coupling support into the bumper.
7. Fix the bumper to the end of the floor, with the narrower section at the bottom and the top flush with the top edge of the floor.



8. Turn the model over and fit the 4 steps under the gaps in the floor.
9. Fix the two halves of the side lifeguard together and fit under the edge of the floor on one side.



10. Fit the trolley planks to the roof, on the central line of the roof and with the outer ends flush with the ends of the sides. Don't fix the roof until you have painted and glazed the interior and fitted the seats.



11. Fix the bogie sides to the bogies.

