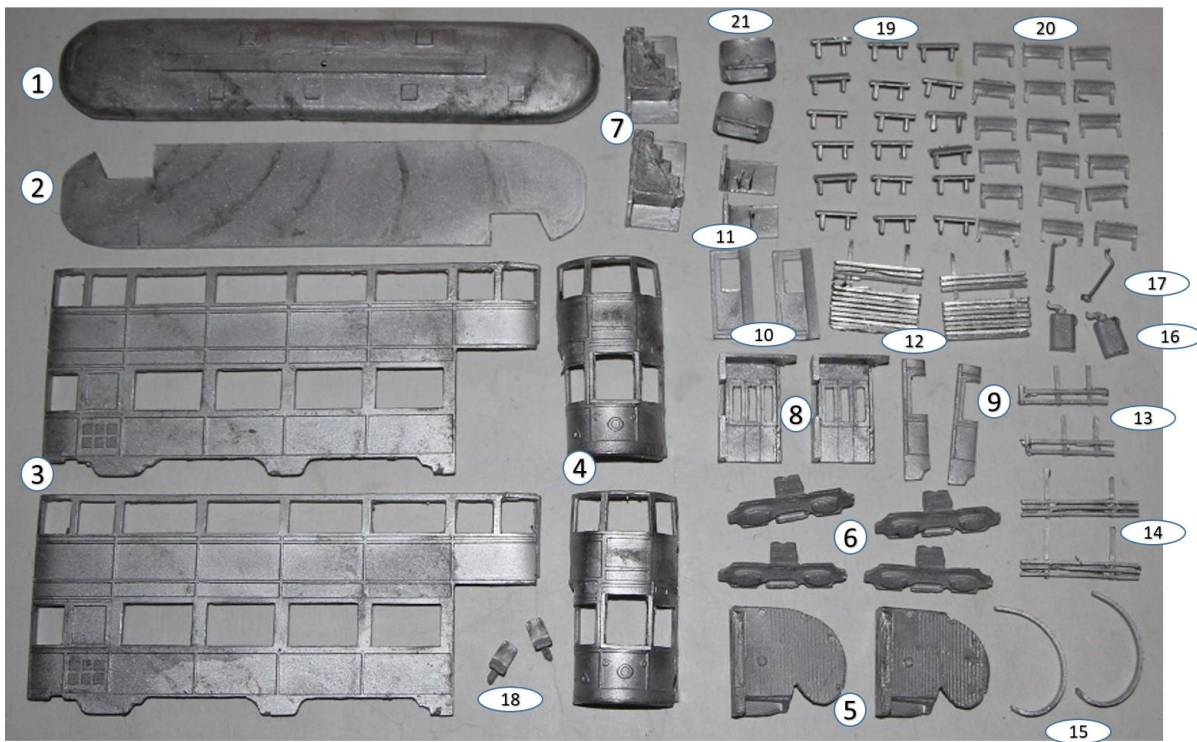


# KW Trams

## **KW 058 Liverpool Cabin**

### Parts



1.	Roof	x1
2.	Floor	x1
3.	Side	x2
4.	End	x2
5.	Platform	x2
6.	Bogie side	x4
7.	Stairs	x2
8.	Platform doors	x2
9.	Platform side panel	x2
10.	Cabin door	x2
11.	Upper stair partition	x2
12.	Lifetray	x2
13.	Side lifeguard	x2
14.	Lifeguard	x2
15.	Bumper	x2
16.	Controller	x2
17.	Handbrake	x2
18.	Driver seat	x2
19.	Upper deck seats	x18
20.	Upper deck seat backs	x18
21.	Upper deck end seats	x2

### Build Steps

1. Fit one end to one side, I used a set square to make sure that they were at the right angle. Repeat for the second end and side.



2. Trim the upper deck floor to fit, and fix to one end / side.



3. Fit the other end and side to make a complete car body.



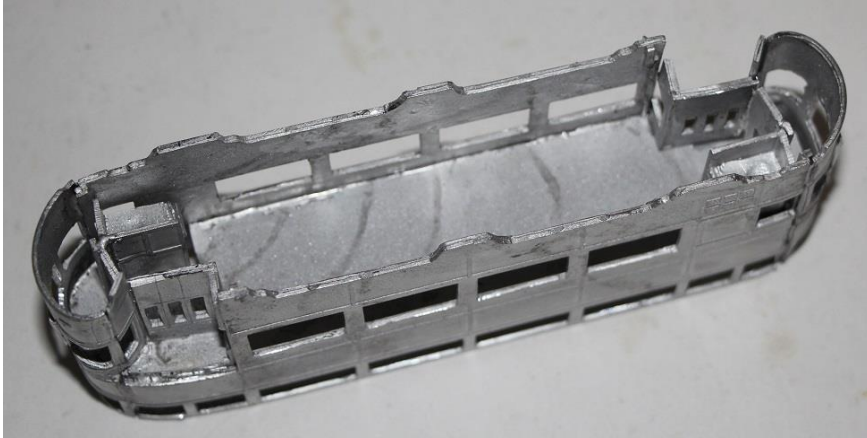
4. Fit the upper deck stair partitions round the stair hole.



5. Fit the platform doors so that the curved top fits to the edge of the upper deck floor and the side is tucked against the internal bead on the side.

6. Fit the platform side panel in the gap between the door and the car end.

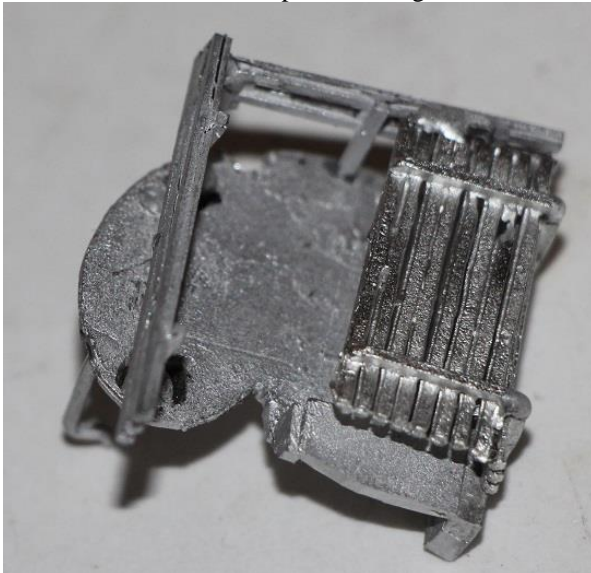
7. Fit the stairs under the stair hole in the upper deck floor and fit the cabin door in the gap between the stairs and the platform door.



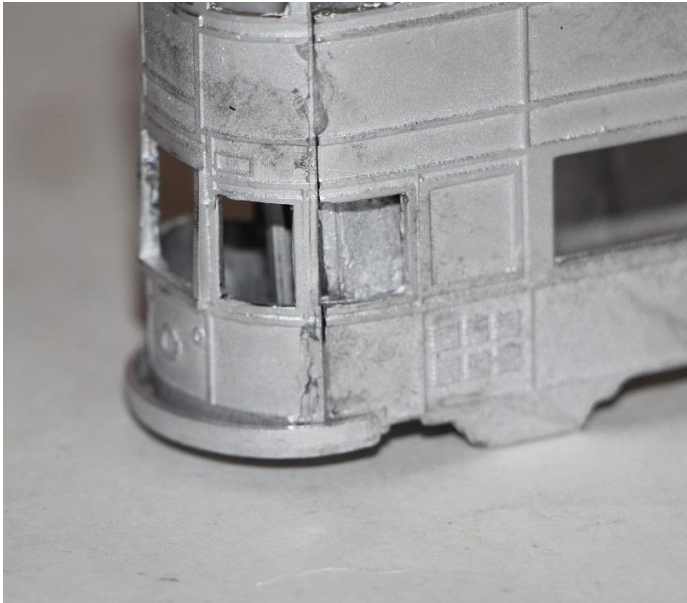
8. Fit a controller, handbrake and driver's seat to each platform.



9. Fit the lifetray, side and end lifeguards under each platform. Don't fit the platforms in the car until the interior has been painted and glazed.



10. Fit the bumper flush to the bottom of the car end.



11. Fit the seat backs to the seats.

12. Fit the roof once the interior has been painted, glazed and the seats fitted.

