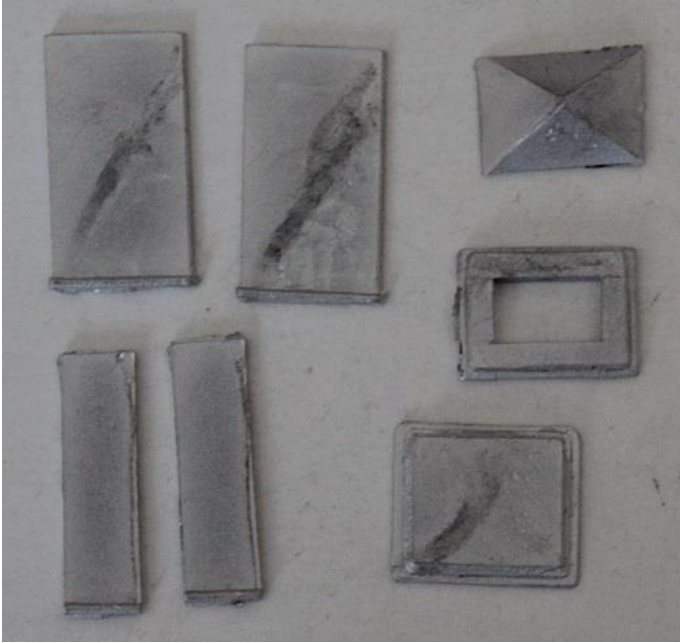


## O Gauge Section Box Instructions

### Ashton Section box

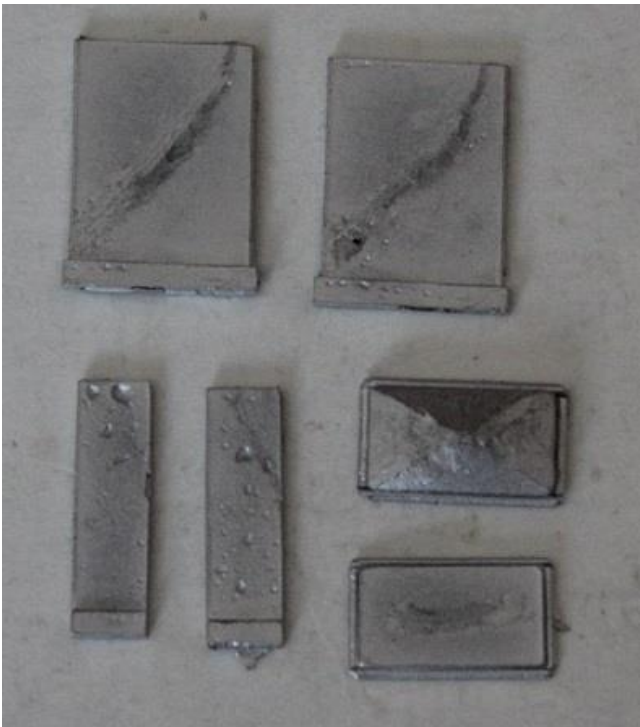


Assemble the front, back and two sides to form a box, with the sides inside the front and back. The beading should line up and be at the top.

The base has shaped sides, with the narrower section at the top. The box fits on top of this just inside the top edges.

The upper piece has a hole in the middle, and fits on the top of the box, slightly overlapping all the way round, with the narrower section at the top, and the top fits centrally on that.

### Bradford Section box

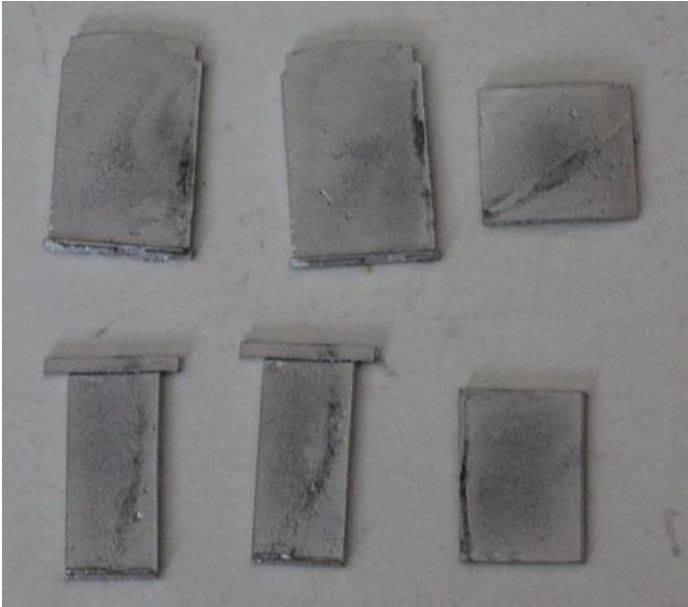


Assemble the front, back and two sides to form a box, with the sides inside the front and back. The beading should line up at the bottom

The base fits with the narrower section at the top. The box fits on top of this just overlapping the top edges.

The top sits centrally on the top of the box.

#### LCC Section box



Assemble the front, back and two sides to form a box, with the sides inside the front and back and the extension pieces in the gaps of the front and back. The beading should be on the outside and line up at the bottom.

The base has shaped sides, with the narrower section at the top. The box fits on top of this just overlapping the top edges.

The top fits on the top of the box, with the curve matching the shape of the top of the front and back. The top is made from softer metal so that it can be gently bent to the right shape.

#### LCC Phone box



Assemble the front, back and two sides to form a box, with the sides inside the front and back. The beading should be on the outside and line up around the top.

The two parts of the top fit inside the upper edge of the box, it may need trimming to fit.

The phone box fits to the middle of the top of the section box, without conforming to the shape of the roof of the section box – there were gaps at the side edges.