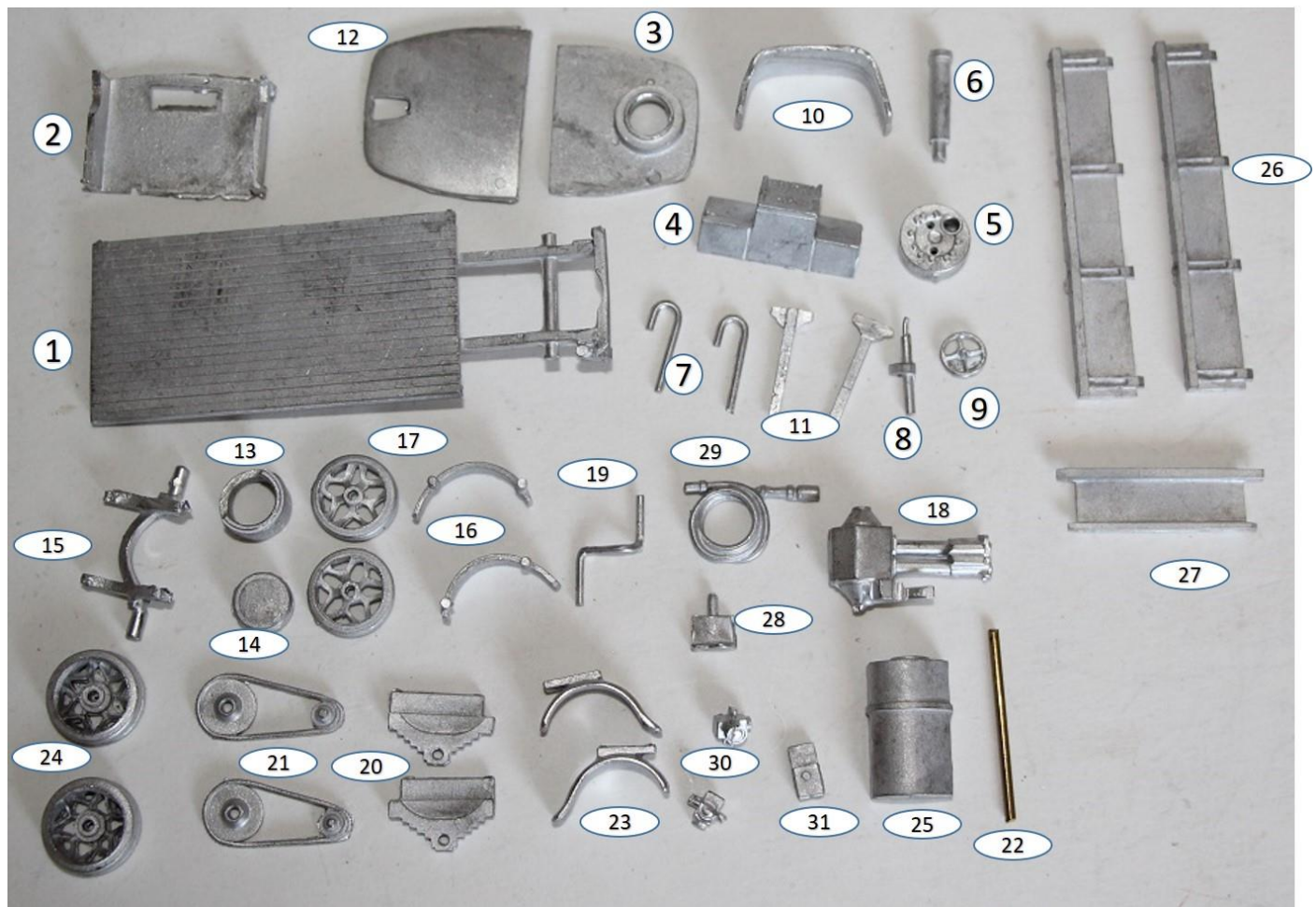


KW Trams

R120d Sentinel Standard

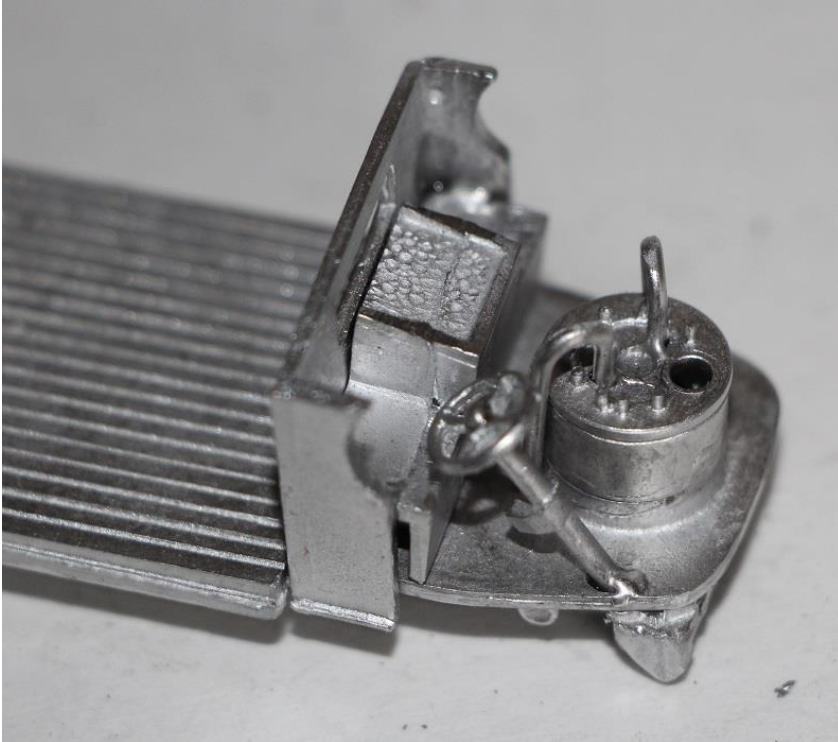
Parts



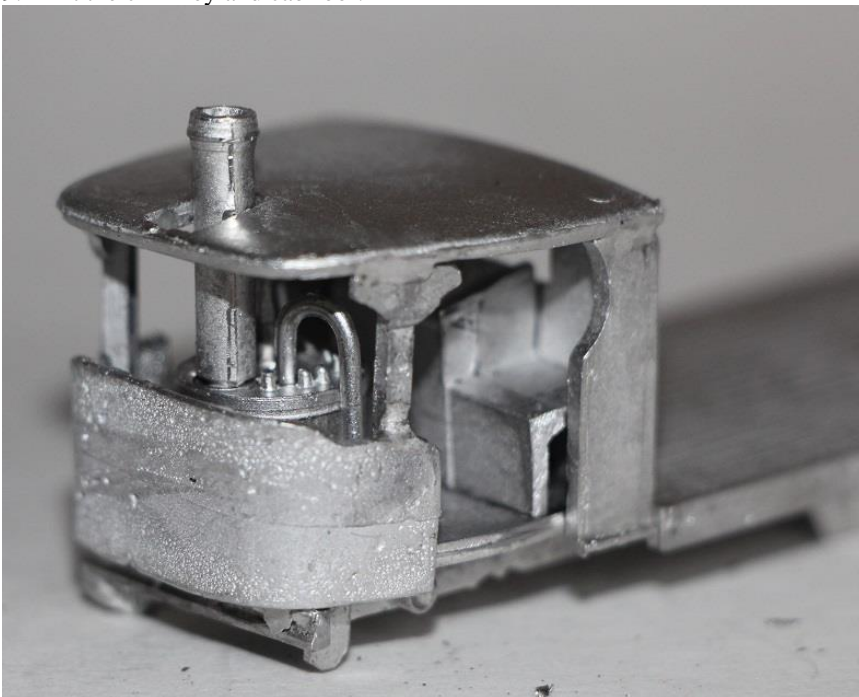
- | | |
|-----------------------|----|
| 1. Chassis | x1 |
| 2. Cab back | x1 |
| 3. Cab floor | x1 |
| 4. Seats / bunker | x1 |
| 5. Boiler top | x1 |
| 6. Chimney | x1 |
| 7. Boiler clamps | x2 |
| 8. Steering column | x1 |
| 9. Steering wheel | x1 |
| 10. Cab front | x1 |
| 11. Roof supports | x2 |
| 12. Cab roof | x1 |
| 13. Boiler lower body | x1 |
| 14. Boiler base | x1 |
| 15. Front axle | x1 |
| 16. Front mudguards | x2 |
| 17. Front wheels | x2 |
| 18. Engine | x1 |
| 19. Bent pipe | x1 |
| 20. Rear axle springs | x2 |
| 21. Chain drives | x2 |
| 22. Rear axle | x1 |
| 23. Rear mudguards | x2 |
| 24. Rear wheels | x2 |
| 25. Water tank | x1 |
| 26. Body sides | x2 |
| 27. Tailgate | x1 |
| 28. Hose bracket | x1 |
| 29. Hose | x1 |
| 30. Lights | x2 |

Build Steps

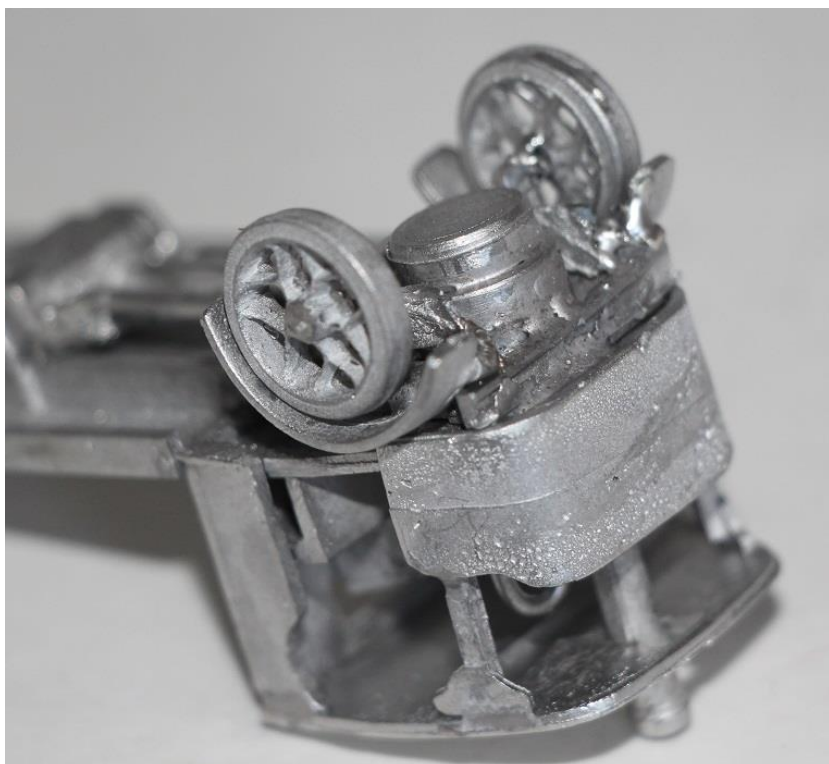
1. Fit the cab back to the chassis.
2. Fit the cab floor onto the chassis inside the cab back, with the raised section upper most.
3. Fit the seat / bunker into the cab back
4. Fix the boiler top to the floor with the large hole centrally at the front.
5. Fix the two boiler clamps into the boiler top and the corresponding holes in the cab floor.
6. Fit the steering column into the hole on the offside of the floor. Don't fit the steering wheel until you have painted the cab interior.



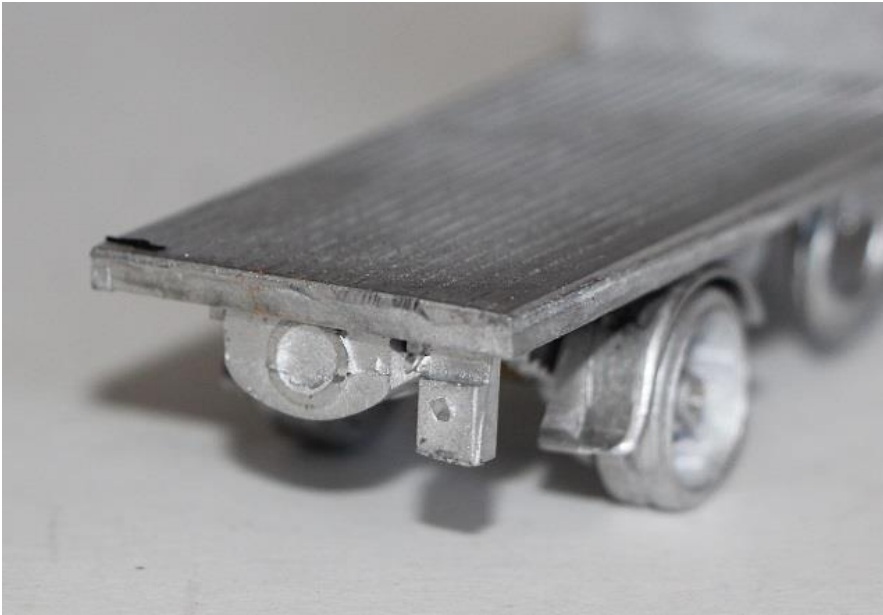
7. Fit the cab front to the cab.
8. Fit the roof supports to the sides of the cab front.
9. Fit the chimney and cab roof.



10. Turn the model over and fit the boiler lower body and base.
11. Fit the front axle round the boiler.
12. Fit the front mudguards and wheels.
13. Fit the engine to the chassis with the hole through the engine lined up with the holes in the chassis.
14. Cut the bent pipe to the correct length and then fit to the end of the motor and under the cab floor.



15. Assemble the rear axle springs, chains and wheels onto the rear axle without fixing any in place. Use this to find the correct position for the rear mudguards then fix the mudguards in place.
16. Fit the chains with the pin on the small cog in the chassis holes by the engine.
17. Fit the rear axle springs to the inside of the chassis members with the cut-out to the front. Making sure there is a small gap between the wheels and the mudguards.
18. Fit the water tank under the rear of the chassis. You will need to trim the sides to make it fit between the rear axle springs.
19. Fit the rear number plate under the rear edge of the chassis and to one side.



20. Fit the body sides and tailgate.
21. Fit the hose bracket & hose to the chassis if required.
22. Fit the lights to the sides of the cab.

